



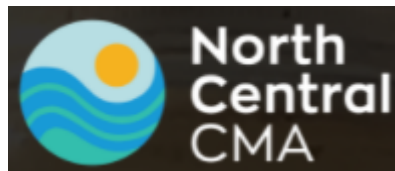
# Creswick

## Local Flood Guide

Flash flood information for Creswick at Creswick Creek



For flood emergency assistance call  
VICSES on **132 500**



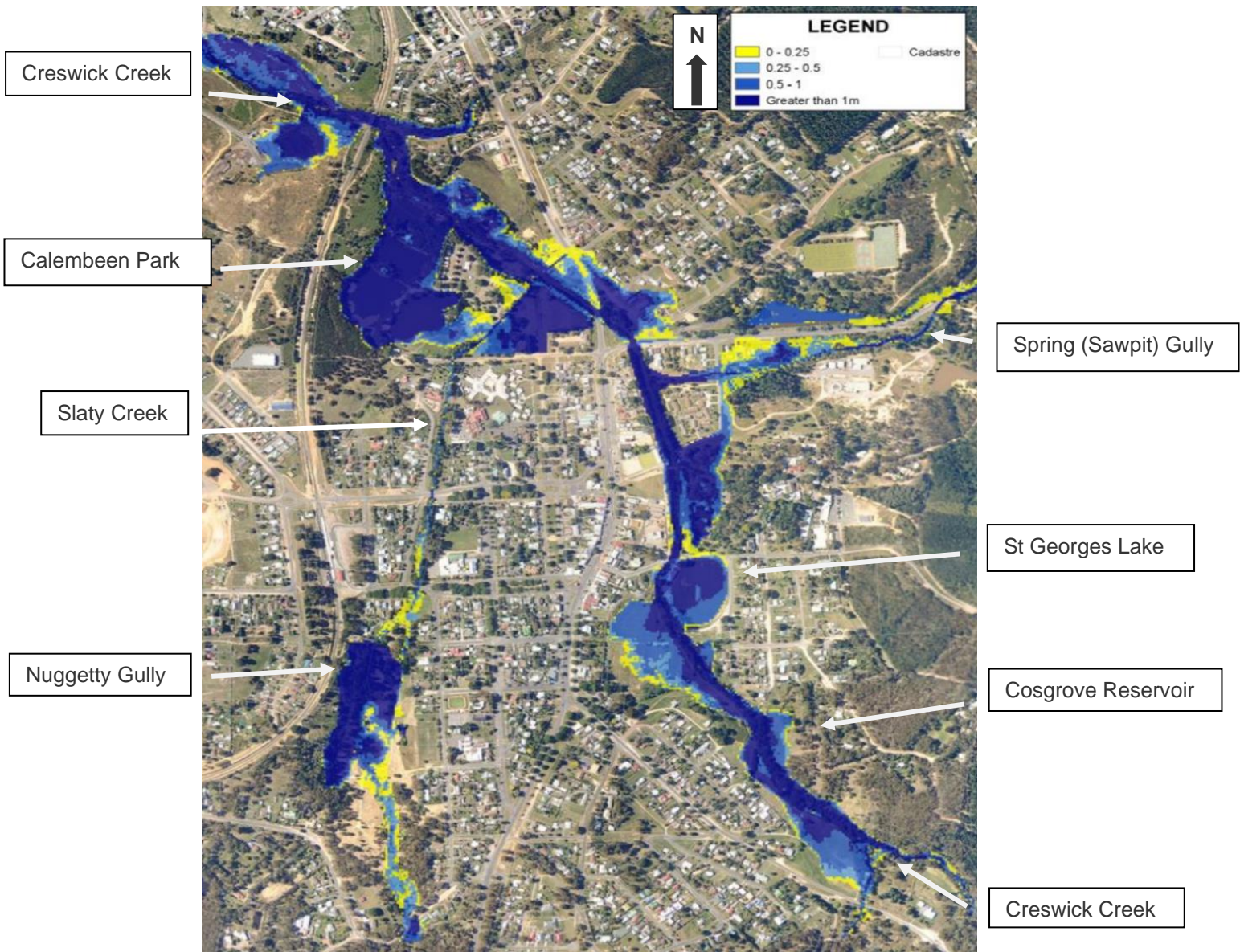


### Creswick Creek

Creswick is located in central Victoria, north of Ballarat in the Hepburn Shire. The main waterway through Creswick is the Creswick Creek, which flows from Dean to the east of Creswick.

- Creswick Creek flows through the town and past Calemben Park towards Clunes.
- Minor waterways around Creswick include Slaty Creek, Sawpit Gully (otherwise known as Spring Gully) and Nuggetty Gully. The minor waterways all flow into the Creswick Creek and contribute to the rapid onset of flash flooding in Creswick.
- The two major water storages located upstream of Creswick: St Georges Lake and Cosgrove Reservoir. If storages are full, they are unable to reduce the extent of flooding in town. There is a limited ability to reduce the extent of flooding.

The map below shows the Creswick Creek and other tributaries at minor, moderate and major flood levels in Creswick. Creswick 2012 - Flood study predicting an 100 year ARI flood event.



#### Disclaimer

This map publication is presented by Victoria State Emergency Service for the purpose of disseminating emergency management information. The contents of the information have not been independently verified by Victoria State Emergency Service. No liability is accepted for any damage, loss or injury caused by errors or omissions in this information or for any action taken by any person in reliance upon it. Flood information is provided by North Central Catchment Management Authority





## Are you at risk of flood?



Creswick is prone to flash flooding. Flash flooding occurs because rain falls faster than the ground has the ability to absorb, causing water run-off into low-lying areas and local drainage systems.

Local drainage systems are unable to cope with the volume of water causing the water to rise rapidly, flowing powerfully and quickly.

Flash flooding in Creswick has been frequent throughout the 1800s and 1900s, with significant floods reported mostly following a period of drought.

- Flash flooding occurs so quickly due to heavy rainfall that you may not receive an official warning. It is important to be aware that no two flood events are the same and it is difficult to predict exactly the nature and extent of any future flood events. As a result, it can be difficult to predict when and where the next flood will be.
- Waterways likely to be affected include:
  - Creswick Creek
  - Spring Creek (Sawpit Gully)
  - Nuggetty Gully



## Did you know?

The worst recorded floods in Creswick’s recent history are the September 2010, January 2011 and January 2022 flood events, all classified as major flood events. These flood events occurred following heavy rainfall upstream of Creswick. The January 2012 flood event caused the following damage impacts:

- 208 dwellings damaged
  - 61 dwellings severely damaged and uninhabitable and 56 residents displaced..
  - \$25 million+ direct cost losses to the agricultural sector \$10 million+ damage and losses to the business sector

Creswick Creek Jan 2022

### Creswick Flood Mitigation

In order to better protect Creswick from future flooding events, local, state and federal governments have jointly funded the Creswick Flood Mitigation and Urban Drainage Plan, released in early 2012.

Flood mitigation works, costing \$1.4 million have been initiated and are being funded by the local, state, and federal governments.

Mitigation work includes:

- Minor creek deepening and widening between Water Street and Castlemaine Road Bridge and between Clunes Road Bridge and Nuggetty Gully.
- Levee systems to protect low-lying areas between Water Street and Nuggetty Gully, Semmens Village, North Parade, and the primary school.
- Additional two culverts under the Clunes Road and Castlemaine Road Bridges.
- Installation of one-way valves on major drains.
- Update of Hepburn Planning Scheme with flood mapping.



**No two floods are the same. Floods like this or worse could occur again.**

**If you live in a low-lying area you may be at risk of flooding or need to detour around flooded areas. Knowing what to do can save your life and help protect your property**

Sandbag Collection Point

**A Sandbag Collection Point is located at the Recreation reserve, Victoria Street, Creswick.**

**Hepburn Shire Council will promote when this collection point is opened during a flooding event through local radio, newspaper, and other media.**

**Creswick Creek flood levels at the Creswick Creek gauge.**

When the Bureau of Meteorology (BoM) issues Flood Warnings they include a prediction of the flood height at Creswick Creek gauge at Water Street Bridge. While no two floods are the same, the following table can give you an indication of what you could expect at certain flood heights, including when your access may be cut off and when your property may be affected.

Height (metres)	Impact/level
	Height shown map page 2.
	<b>Major flood level</b>
4.48m	Jan 2011 (20-year ARI)
	At major flood level (20 year ARI), there are slightly less effects than the September 2010 flood. Floodwater overtops Albert Street inundating a significant number of properties including units on the southwest corner of Semmens Village.
	At this level, 90 homes and businesses are flooded including six units in Semmens Village, a motel, football oval and clubrooms, dental surgery, bowling club, part of a caravan park and primary school. Water overtops the Castlemaine Road Bridge, restricting access to and from town via Midland Highway
	Slightly deeper water than September 2010 flood event, same areas impacted as per September 2010 listed below; 90 homes and businesses flooded.
	<b>Moderate flood level</b>
3.46m	Sept 2010 (10- year ARI)
	Creswick Creek overtops its banks between Clunes Road and Castlemaine Road inundating North Parade. Floodwater begins to inundate a few properties on the east side of Albert Street, while Creswick Creek back floods up Nuggetty Gully, flooding Cushing Avenue and a few properties south of Cushing Avenue.
	<b>Minor flood level</b>
2.53m	(5-year ARI)
	Creswick Creek back floods Nuggetty Gully and water begins to pool in the open space north of Cushing Avenue, extending up to the Cushing Avenue – Cambridge Street intersection. Creswick Creek overflows, though floodwater is very shallow, and no properties are affected.



Creswick Oval Jan 2022  
(source: Ballarat SES Unit)

### Staying Informed and Further Information

- Current warnings (VicEmergency) [emergency.vic.gov.au](https://emergency.vic.gov.au) 1800 226 226
- Bureau of Meteorology (BoM) [bom.gov.au/vic/warnings](https://bom.gov.au/vic/warnings) 1300 659 217
- VicRoads Traffic [traffic.vicroads.vic.gov.au](https://traffic.vicroads.vic.gov.au)
- Emergency Broadcasters
  - ABC Radio 774 AM
  - ABC Radio 107.9 FM
  - Voice FM 99.9 FM
  - 3BA Radio 102.3 FM
  - Power FM 103.1 FM
  - SKY NEWS Television
- VICSES Social Media
  - [facebook.com/vicses](https://facebook.com/vicses)
  - [twitter.com/vicsesnews](https://twitter.com/vicsesnews)
- Preparing for Flood Emergencies [ses.vic.gov.au/get-ready](https://ses.vic.gov.au/get-ready)
- Creating an Emergency Plan [redcross.org.au/prepare](https://redcross.org.au/prepare)
- North Central Catchment Management Authority [www.nccma.vic.gov.au](https://www.nccma.vic.gov.au) (03) 5448 7124
- Hepburn Shire Council name [www.hepburn.vic.gov.au](https://www.hepburn.vic.gov.au) (03) 5348 2306




**Life-threatening  
Emergency  
000**



# Flood warnings and emergency checklist

A **Flood Watch** means there is a developing weather pattern that might cause floods in one or two days. This service covers the whole state.

A **Flood Warning** means flooding is about to happen or is already happening. There are minor, moderate and major flood warnings. This service is only available where flood warning systems are in place.

 A Minor Flood Warning means floodwater can:	 A Moderate Flood Warning means floodwater can:	 A Major Flood Warning means floodwater can:
Spill over river banks and cover nearby low lying areas.	Spill over river banks and cover larger areas of land.	Cause widespread flooding.
Come up through drains in nearby streets.	Reach above floor levels in some houses and buildings.	Many houses and businesses are inundated above floor level.
Require the removal of stock in some cases.	Require evacuation in some areas.	Cause properties and whole areas to be isolated by water.
Cover riverside camping areas and affect some low-lying caravan parks.	Affect traffic routes.	Closes major roads and rail routes.
Cover minor roads paths, tracks and low level bridges.	Require the removal of stock in rural areas.	Require many evacuations.
Affect backyards and buildings below floor level.		Affect utility services (power, water, sewage etc).

## Severe Thunderstorm Warnings

Thunderstorms are classified as severe when there is potential to cause significant localised damage through wind gusts, large hail, tornadoes or flash flooding. Severe Thunderstorm Warnings are issued to the community by BoM.

## Severe Weather Warnings

These warnings are issued to the community by BoM when severe weather is expected that is not directly related to severe thunderstorms or bushfires. Examples of severe weather include damaging winds and flash flooding.

## Flash Flooding

- Flash Flooding can occur quickly due to heavy rainfall. You may not receive an official warning.
- Stay informed- monitor weather warnings, forecasts and river levels at the [BoM website](#) and warnings through [VicEmergency](#).



## VICSES Warnings

VICSES utilises the VicEmergency app, website and hotline to distribute flood warnings and emergency information in Victoria. Communities can also access this information through VICSES social media channels and emergency broadcasters.

VICSES warnings aim to provide you with information to help you make good decisions to protect yourself and your family

The warning level is based on severity, conditions and the likelihood that the emergency could impact on the community.

WARNING LEVELS	
	<p><b>EMERGENCY WARNING</b></p> <p>You are in imminent danger and need to take action immediately. You will be impacted. A Major flood warning usually fits into this category</p>
	<p><b>WARNING (WATCH AND ACT)</b></p> <p>An emergency is developing nearby. You need to take action now to protect yourself and others. A Moderate flood warning usually fits into this category.</p>
	<p><b>ADVICE</b></p> <p>An incident is occurring or has occurred in the area. Access information and monitor conditions.</p> <p>Can also be used as a notification that activity in the area has subsided and is no longer a danger to you. A Minor flood warning or Flood Watch usually fits into this category.</p>

ADDITIONAL MESSAGES	
	<p><b>PREPARE TO EVACUATE/ EVACUATE NOW</b></p> <p>An evacuation is recommended or procedures are in place to evacuate.</p>
	<p><b>COMMUNITY INFORMATION</b></p> <p>A newsletter containing updates for communities affected by an emergency.</p> <p>Can also be used as a notification that an incident has occurred but there is no threat to community.</p>
	<p><b>EMERGENCY ALERT</b></p> <p>During some emergencies, we may alert communities by sounding a local siren, or by sending an SMS to mobile phones or a voice message to landlines.</p>

## Your emergency plan

Emergencies can happen at any time and with little warning. People who plan and prepare for emergencies can reduce the impact and recover faster.

Taking the time to think about emergencies and make your own plan helps you think clearly,, have more control and make better decisions when an emergency occurs.

Visit [redcross.org.au/prepare](https://redcross.org.au/prepare) start creating your plan.



- Remember, you may not receive any official warning.
- Emergency assistance may not be immediately available. Be aware of what is happening around you to stay safe.
- Never wait for a warning to act.



## Emergency Kit

Visit [Emergency Toolkit](#) for more information



Every home and business should have a basic emergency kit with supplies for 3 days:



Check your kit often. Make sure things work. Replace out of date items.

When a warning is issued, have ready for use or pack into your kit:

### I need to add:

Write your list here. Tick items as you pack them into your kit.

Special needs (eg, babies, elderly and people with a disability)	
Photos	
Family keepsakes	
Valuables	
Other	





## Emergency Checklist

- Check if your insurance policy covers flooding.
- Keep this list of emergency numbers in your mobile phone.
- Download the Vic Emergency app on your mobile phone.
- Put together an emergency kit and prepare a home or business.
- Emergency plan, see <https://www.redcross.org.au/prepare>



## Before Flooding

- Leaving early before flooding occurs is always the safest option. Evacuating through floodwater is very dangerous and you may be swept away.
- Stay informed- monitor weather warnings, forecasts and river levels at the <http://www.bom.gov.au> and warnings through [www.emergency.vic.gov.au](http://www.emergency.vic.gov.au)
- Secure objects likely to float and cause damage.
- Listen to the radio and check the VICSES website for information and advice.
- Go over your emergency plan. Pack clothing and other extra items into your emergency kit and take this with you if you evacuate.

## During Flooding

- Make sure your family members and neighbours are aware of what is happening.
- Conditions change rapidly; roads and escape routes can be covered or blocked.
- Put household valuables and electrical items as high as possible.
- Turn off water, gas and electricity at the mains.
- If you are staying in a caravan, move to higher ground before flooding begins.
- Seek shelter indoors, away from floodwater.
- If floodwater comes inside, move to a higher point such as a kitchen bench or second storey.
- Stay away from trees, drains, low-lying areas, creeks, canals, culverts and floodwater.

## Evacuating in Flooding

- Flood water is dangerous. Never enter floodwater. It can take just 15cm of water to float a car.
- Find alternative travel routes if roads or underpasses are flooded.
- Be aware of driving hazards, such as mud, debris, damaged roads and fallen trees. If driving conditions are dangerous, safely pull over away from trees, drains and floodwater.

## After Flooding

- For recovery information, contact your local council, go to the VicEmergency Relief and Recovery-[emergency.vic.gov.au/Relief](http://emergency.vic.gov.au/Relief) page or call the VicEmergency Hotline (1800 226 226).
- Have all electrical and gas equipment professionally tested before use.
- Stay away from damaged and flooded buildings, fallen trees and powerlines and damaged roads until authorities advise it is safe to do so.
- Drive slowly, obey all road signs and never drive through floodwater.
- When cleaning, protect your health and safety. Wear strong boots, gloves and protective clothing and wash your hands and clothes regularly.

For VICSES emergency assistance,  
call **132 500**, or **Triple Zero (000)**  
in life threatening emergencies.