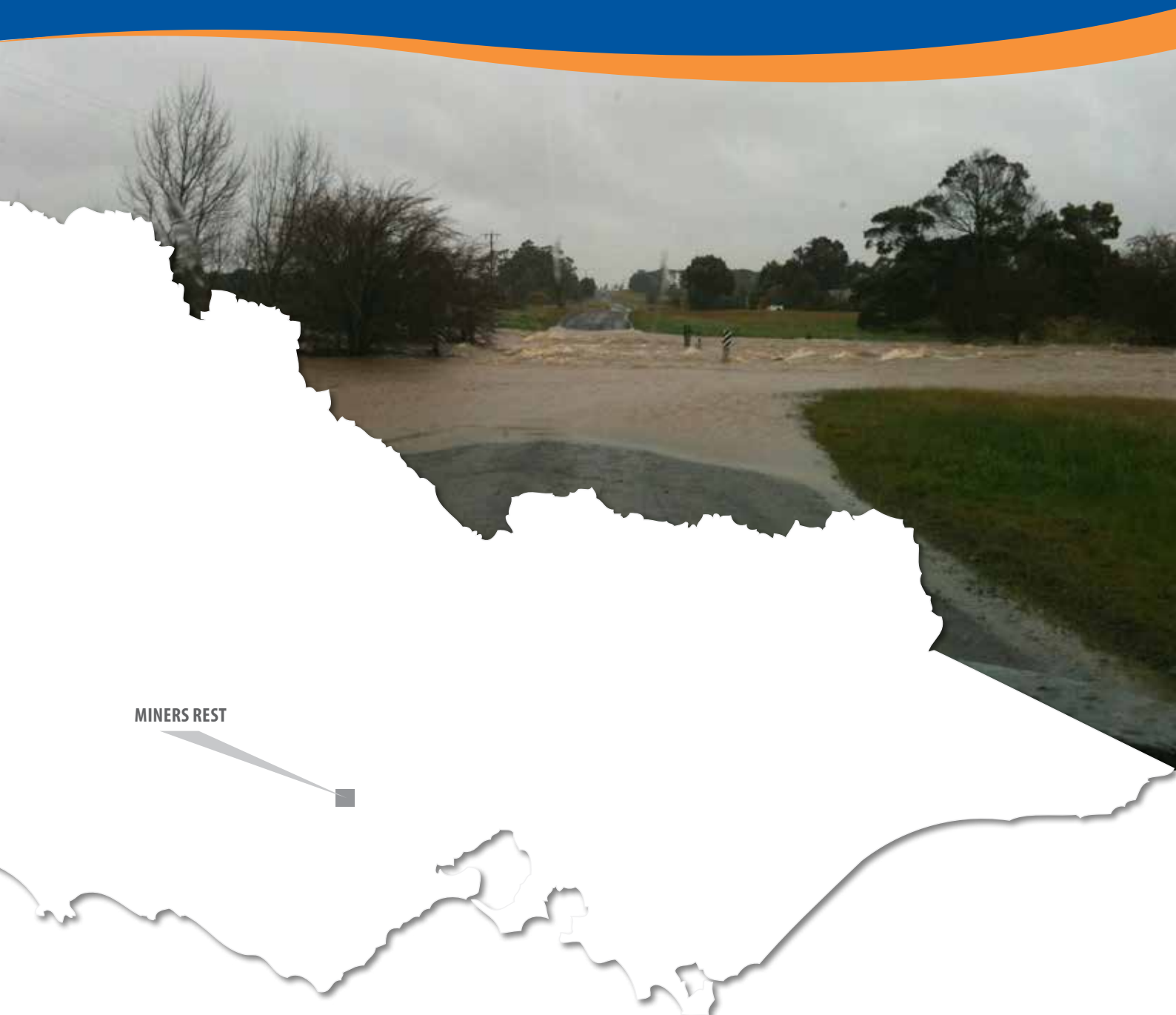




# Local Flood Guide Miners Rest



Flood information for the Burrumbeet Creek at Miners Rest



MINERS REST



Glenelg Hopkins



Protecting our future - Naturally



FLOOD STORM EMERGENCY **132 500**

For more information visit [ses.vic.gov.au](http://ses.vic.gov.au)

## The Miners Rest local area

The Miners Rest township is located on the banks of Burrumbeet Creek close to the north-western outskirts of Ballarat.

Burrumbeet Creek is over 30 kilometres long and flows from Invermay in the east, heading west through Miners Rest and Windermere before it flows into Lake Burrumbeet. Surrounding the creek is rural farmland with some residential and industrial areas including Miners Rest.

As the land surrounding Burrumbeet Creek and its branches is relatively flat, with many wetlands and swampy areas, flooding often affects large areas of land adjacent to the creek.

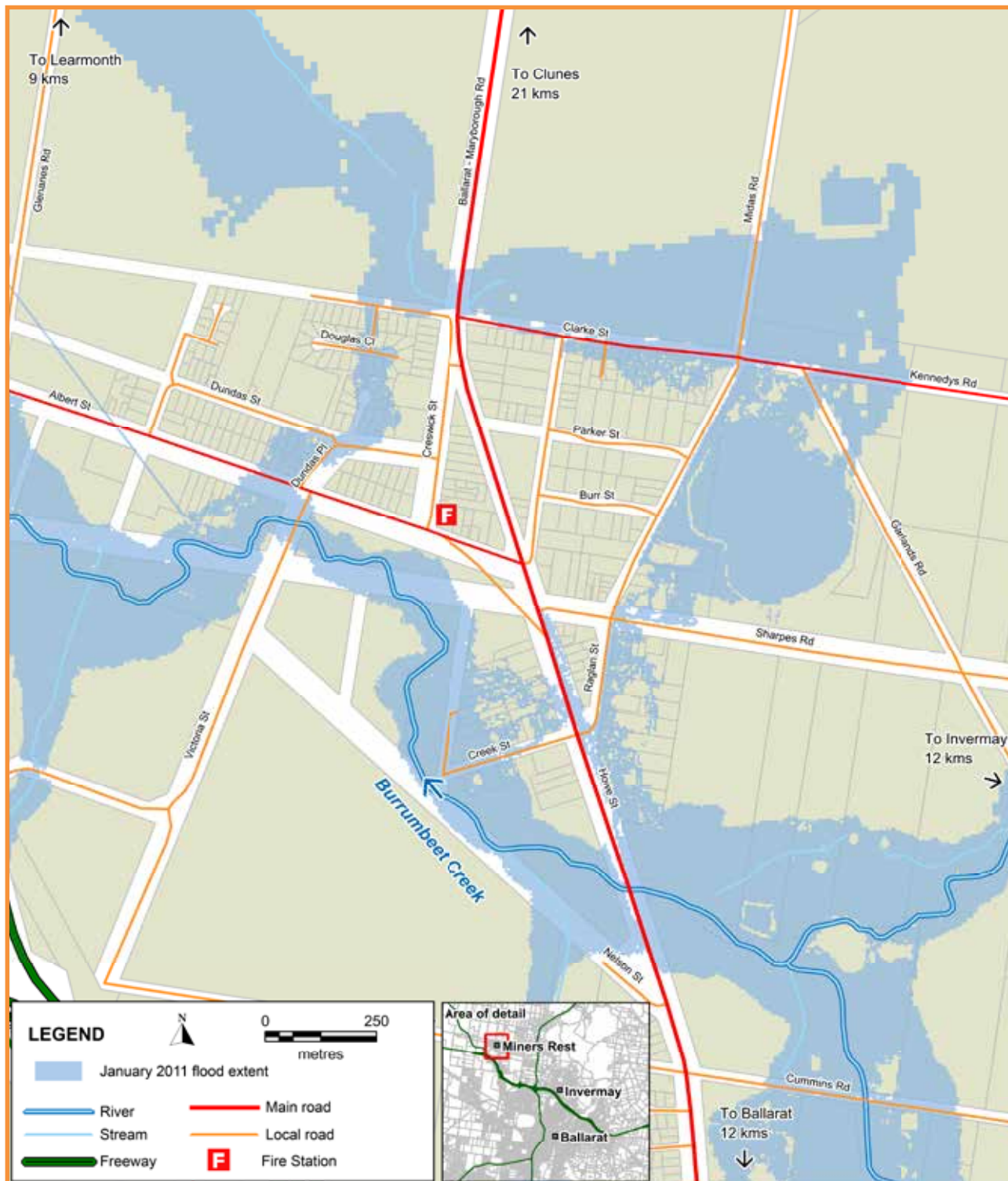
The map below shows the extent of flooding experienced throughout Miners Rest in January 2011. This is one of many possible flooding scenarios for Miners Rest.

### Your local emergency broadcasters are:

- ABC Local 107.9 FM
- ABC Western Victoria 594 AM
- ABC Western Victoria 94.1 FM
- 3BA 102.3 FM
- Power 103.1 FM
- SKY NEWS Television

### City of Ballarat Contact Details:

Phone: (03) 5320 5500  
 Web: ballarat.vic.gov.au



#### Disclaimer

This map publication is presented by Victoria State Emergency Service for the purpose of disseminating emergency management information. The contents of the information has not been independently verified by Victoria State Emergency Service. No liability is accepted for any damage, loss or injury caused by errors or omissions in this information or for any action taken by any person in reliance upon it. Flood information is provided by Glenelg Hopkins Catchment Management Authority.

### Are you at risk of flooding?

Miners Rest can be affected by stormwater flooding and/or flash flooding. Stormwater flooding occurs when heavy rainfall causes stormwater drains to overflow and flash flooding occurs when heavy rain causes Burrumbeet Creek to spill over its banks.

During stormwater flooding, water overflows into low-lying areas and floods roads and adjoining properties. During major storms, flooding of properties usually occurs 3-6 hours after the start of heavy rainfall with water levels peaking at 7-10 hours. Areas prone to stormwater flooding include low-lying areas of James Court, Douglas Close, Dundas Place and Clarke Street near Douglas Close.

Flash flooding from Burrumbeet Creek occurs when intense rainfall causes Burrumbeet Creek to overflow and flood into surrounding areas. Areas prone to flooding from Burrumbeet Creek include:

- Creek Street
- Hamlin Street
- Top end of Victoria Street
- Albert Street between Victoria Street/Dundas Place
- Cummins Road
- Parts of Sharpes Road and Raglan Street.

These two types of flooding can happen separately or at the same time, depending on where rain falls and its intensity.

### Burrumbeet Creek flood impacts at Miners Rest

While no two floods are the same, the following table gives you an indication of what may be expected in Miners Rest for varying intense rainfalls in five and 24-hour periods, based on the Ballarat Aerodrome Rainfall gauge. Residents can check the live rainfall data for Ballarat Aerodrome (Ballarat AWS) on the BoM website at [bom.gov.au/vic/flood/corangamite.shtml](http://bom.gov.au/vic/flood/corangamite.shtml) or by searching for "latest weather observations Ballarat" in your search engine.

**Expected flood impacts based on rainfall over time in Miners Rest**

| Rainfall total over 5 hours | Rainfall total over 24 hours | Expected flooding in Miners Rest   |
|-----------------------------|------------------------------|--|
| 40 millimetres              | 70 millimetres               | Stormwater flooding of properties along Clarke, Creek and Hamlin Streets. Victoria Street ford and some properties on Garlands Road are flooded. Miners Rest Wetland overtops, resulting in shallow inundation of some properties in Sharpes Road and Raglan Street. 28 properties may have water on their property. Some local roads may be flooded.  |
| 45 millimetres              | 85 millimetres               | Some inundation of Miners Rest Road. Shallow flooding of properties along Sharpes Road and Raglan Street. 42 properties may have water on their property, some local roads flooded.  |
| 60 millimetres              | 100 millimetres              | In addition to the above, some water across the entrance to Macarthur Park. 52 properties may have water on their property. Similar impact to January 2011 flood.  |
| 75 millimetres              | 120 millimetres              | Extensive flooding of Creek and Hamlin Streets. Albert Street overtopped resulting in Dundas Place, James Court, Douglas Close, Howe Street and Garlands Road being flooded. Some water across the Sunraysia Highway. Extensive flooding of Miners Rest Road (west of Albert Road). Some flooding in Sharpes Road, Raglan Street and Howe Street from overtopping of wetlands. Midland Highway flooded. 14 houses may be flooded above floor level, and another 96 may have water on their property. |
| 85 millimetres              | 140 millimetres              | Midland Highway becomes impassable and shallow flooding occurs on the Western Highway. 31 houses are potentially flooded above floor level and another 111 properties may have water on their property.  |

### Did you know?

Miners Rest has flooded in 1981, 1989, 1993, 1997, 2000, 2010 and most recently in January 2011. Floods from Burrumbeet Creek rise and fall quickly. If you are isolated in your home due to flooding, it is likely to be for less than 24 hours.

The January 2011 flood resulted from a low pressure trough which brought four days of consistent heavy rainfall. Flooding began on the third day of rain and concluded with 95 millimetres on the 14th January. In contrast the September 2010 flood was caused by eight hours of heavy rainfall.

The largest flood recorded in Miners Rest was January 2011, which caused:

- 17 homes to flood above floor level in Miners Rest.
- Albert Street embankment to overtop, flooding properties in Dundas Place, James Court and Douglas Close.
- Miners Rest wetland to overflow, inundating properties in Raglan Street and part of Sharpes Road.
- Flooding of numerous roads, including the Midland Highway, Gillies Road, Albert Street/Miners Rest Road/Pound Hill Road, Howe Street, the Sunraysia Highway and many local streets.

If you live or work close to the creek you may be at risk from floods. Even if your property is not flooded, you may be affected indirectly as roads may be closed and power, sewerage and telephone services may be disrupted.

# About Flood Warnings

## What warnings mean

Warnings are issued by the Bureau of Meteorology (BoM) to inform people about the possibility of flooding.

A **Flood Watch** means there is a developing weather pattern that might cause floods in one or two days.

Victoria State Emergency Service (SES) will give information about how the floodwater might affect people and properties. This includes safety messages to remind you what to do.

As Miners Rest is prone to flash flooding, Severe Weather Warnings and Severe Thunderstorm Warnings are your earliest triggers to activate your Home Emergency Plan.

### Severe Thunderstorm Warnings

Thunderstorms are classified as severe, due to their potential to cause significant localised damage through: wind gusts, large hail, tornadoes or flash flooding. Severe Thunderstorm Warnings are issued to the community by BoM.

### Severe Weather Warnings

These warnings are issued to the community by BoM when severe weather is expected that is not directly related to severe thunderstorms or bushfires. Examples of severe weather include damaging winds and flash flooding.

Flash flooding results in water rising rapidly and flowing powerfully and quickly. Miners Rest residents should listen out for warnings with flash flooding and remember that flash flooding:

- Occurs so fast that it is difficult to provide a detailed warning. Often it arrives without any warning.
- Usually results from heavy rainfall falling during short severe storms.

Listen to Severe Thunderstorm Warnings and Severe Weather Warnings for your area. If you hear a warning, check the BoM and SES websites for information and advice. You can monitor river and rainfall conditions on the BoM website at [bom.gov.au](http://bom.gov.au).

## Know your local environment

If you live in the Miners Rest area, keep an eye on the weather, especially heavy rainfall or sustained rainfall over a number of days.

Miners Rest residents should plan for flooding when:

- A Severe Weather or Severe Thunderstorm warning is issued for the Central weather district (which includes the Burrumbeet Creek area, though Miners Rest may not be explicitly mentioned).
- Weather forecasting predicts intense rainfall

Properties affected by stormwater flooding could experience flooding if an intense downpour occurs in Miners Rest itself.

Knowing your local area and making your own observations are a great way to help you prepare for future floods.

**Remember, you may not receive any official warning.**

**Emergency assistance may not be immediately available. Be aware of what is happening around you to stay safe.**

**Never wait for a warning to act.**

## Emergency Alert

SES may provide alerts to the Miners Rest community through the Emergency Alert telephone warning system. All emergency service providers can use an Emergency Alert to warn communities about dangerous situations by voice message to landline telephones or text message to mobile phones.

If you receive a warning, make sure that all family members, people at work and your neighbours are aware of the situation.

**If you receive an Emergency Alert you should pay attention and act. It could mean life or death.**

If you need help to understand a warning, ask a friend, neighbour or family member.

## Warnings for Miners Rest

BoM does not issue warnings specifically for Burrumbeet Creek at Miners Rest.

Intense or prolonged rainfall is your only indication of future flooding. If flooding is likely, tune into your emergency broadcasters (see page 1) to watch and listen for information relating to Burrumbeet Creek, Burrumbeet catchment or the Central weather district

Information about potential floods will also be available from SES. You can monitor rainfall recorded at the Ballarat Aerodrome (closest to Miners Rest) on the BoM website at [bom.gov.au](http://bom.gov.au)

## Safety in flash flooding

Driving through floodwater is the number one cause of adult deaths during floods. Evacuating through floodwater is very dangerous and you may be swept away. Never walk, ride, swim or drive through floodwater.

Playing in floodwater is the number one cause of death during floods for children and teenagers. Floodwater is filled with unseen dangers, harbouring hidden debris such as broken glass, shattered timbers and twisted metals as well as sewage, putrid food waste and toxic chemicals.

Floodwater is toxic never allow your children to play or swim in floodwater.

If you become trapped by rising floodwater inside your home or business, stay inside and seek the highest part e.g bench tops. Call Triple Zero (000) in a life-threatening emergency.



### NOW – before a flood

- Check if your home or business is subject to flooding. For more information, contact the City of Ballarat.
- Develop an emergency plan.
- Check if you could be cut off by floodwater.
- Know the safest way to go if you decide to leave your property and plan an alternative route.
- Check your insurance policies to ensure your equipment, property and business are covered for flood damage.
- Keep a list of emergency numbers near the telephone.
- Put together an emergency kit.
- Stay alert for weather warnings and heavy rainfall.

### When a flood is likely

- Take action. Follow your emergency plan.
- Listen to your radio for information and advice.
- Check your neighbours are safe and know about the flood.
- Stack possessions on benches and tables with electrical goods in the highest places.
- Anchor objects that are likely to float and cause damage.
- Move rubbish bins, chemicals and poisons to the highest place.
- Put important papers, valuables, photos and other special personal items into your emergency kit.
- Business owners should raise stock, business records and equipment onto benches and tables.
- Rural property owners should move livestock, pumps and machinery to higher ground.
- If you are likely to be isolated, have enough food, drinking water, medicine, fuel and other needs to last at least three days.
- Do not forget pet food and stock feed.

### Your emergency plan

Emergencies can happen at any time, with little warning. People who have planned and prepared for emergencies will reduce the impact and recover faster.

Taking the time to think about emergencies and make your own plan helps you think clearly, have more control and make better decisions when an emergency occurs.

Your emergency plan should identify:

- The types of emergencies that might affect you.
- How those emergencies might affect you.
- What you will do before, during and after an emergency.
- Where to get more information.
- Where you will go if you evacuate and the best way to go in different circumstances.
- A list of phone numbers you will need, including emergency service providers, your insurance company, friends and family.



Visit [ses.vic.gov.au](http://ses.vic.gov.au) to obtain a copy of your Home Emergency Plan workbook

### Evacuation

During a flood, police, SES, and other emergency service providers may advise you to evacuate to keep you safe. It is important that you follow this advice.

There are two types of evacuation notices that may be issued via your emergency broadcaster during a flood:

- **Prepare to evacuate** – means you should act quickly and take immediate action to protect your life and property. Be ready to leave your property.
- **Evacuate immediately** – you must leave immediately as there is a risk to lives. You may only have minutes to evacuate in a flash flooding situation.

Do not return to your home until you are sure it is safe to do so. You do not need to wait to be told to evacuate.

# Emergency Kit

Every home and business should have a basic emergency kit:



Check your kit often. Make sure things work. Replace out of date items.

When a warning is issued, have ready for use or pack into your kit:



## I need to add:

Write your list here. Tick items as you pack them into your kit.

- Special needs \_\_\_\_\_
- Photos \_\_\_\_\_
- Family keepsakes \_\_\_\_\_
- Valuables \_\_\_\_\_
- Documents \_\_\_\_\_
- Other \_\_\_\_\_

# During and After a Flood

**Never**  
Drive, Ride or Walk  
Through Floodwater

## During a flood

When flooding has begun:

- **Never drive, ride, swim or walk through floodwater.**
- Remember that floodwater can be deeper than you think and can hide damaged roads and bridges.
- Never let your children play or swim in floodwater. It is dirty, dangerous and deadly.
- Tune in to your emergency broadcasters: ABC Local Radio, Commercial Radio, designated Community Radio Stations and SKY NEWS Television.
- In life-threatening emergencies, call Triple Zero (000).
- For SES emergency assistance during floods and storms call 132 500.
- Stay away from all waterways including drains and culverts.
- Stay away from fallen powerlines as electricity travels easily through water.
- Be aware that animals such as snakes, rats, spiders and other pests may be on the move during a flood. These animals can come into houses and other buildings or hide around sandbags.
- Keep in contact with neighbours.
- Be prepared to act quickly.

## After a flood

Flood dangers do not end when the water begins to fall. To make sure you stay safe:

- Keep listening to local emergency broadcasters.
- Do not return home until you are sure that it is safe.

Once you return to your home:

- Investigate the structural safety of your building.
- Keep the electricity and gas off until checked and tested by a professional.
- When entering a building, use a torch to light your way. Never use matches or cigarette lighters as there may be gas inside.
- Take photographs of all damage for insurance.
- Drink bottled water or boil all drinking water until advised that the water supply is safe.
- Throw away any food or medicines that may have been in contact with floodwater or affected by power outages.
- Clean your home straight away to prevent disease.

## How SES helps the community

The Victoria State Emergency Service (SES) is a volunteer based emergency service. Although SES volunteers attempt to reach everyone prior to or during an emergency, at times this is not possible, especially during flash flooding which occurs so quickly. Therefore it is advisable for you to be prepared for emergencies so that you can share responsibility for your own wellbeing during those times. In a flood, SES assistance may include:

- Giving flood information
- Protecting essential services
- Helping to protect infrastructure
- Rescuing people from floodwater
- Advising of an evacuation

To assist your preparation, it is recommended that you obtain a copy of the SES Home Emergency Plan by visiting [ses.vic.gov.au](http://ses.vic.gov.au)



# Emergency Checklist

## NOW: Flood preparation

- Check if your insurance policies cover flooding.
- Keep this list of emergency numbers near the telephone.
- Put together an emergency kit and prepare a home or business emergency plan, see [ses.vic.gov.au](http://ses.vic.gov.au)

## When you hear a Flood Watch or weather warning

- Listen to Severe Weather Warnings for flash flood.
- Listen to radio and check the SES website for more information and advice.
- Go over your emergency plan. Pack clothing and other extra items into your emergency kit and take this with you if you evacuate.
- Leave early if you intend to evacuate.

## When flooding may happen soon (heavy rainfall)

- Make sure your family members and neighbours are aware of what is happening.
- Conditions change rapidly, roads and escape routes can be covered or blocked. Don't forget to take pets and your medicine with you.
- Put household valuables and electrical items as high as possible.
- Turn off water, gas and electricity at the mains.
- Secure objects likely to float and cause damage.
- If you are staying in a caravan or temporary dwelling, move to higher ground BEFORE flooding begins.

## During the flood

- For SES emergency assistance, call 132 500.
- DO NOT drive, ride, swim or walk through floodwater. This is the main cause of death during floods.
- NEVER allow children to play in floodwater. This is the main cause of death during floods for children and young people.
- Stay away from drains, culverts and waterways as water can flow quickly and have strong currents.
- Stay well clear of fallen trees, powerlines and damaged buildings.
- If you are trapped inside a building, stay inside and shelter in the highest place. Call Triple Zero (000) in a life-threatening emergency.

## After the flood: recovery

- Have all electrical and gas equipment professionally tested before use.
- If your property has been flooded, check with the City Of Ballarat for information and advice.

For more information visit:

- [ses.vic.gov.au](http://ses.vic.gov.au)
- [facebook.com/vicses](https://www.facebook.com/vicses)
- [twitter.com/vicseswarnings](https://twitter.com/vicseswarnings)

# Emergency Contacts

**Life-threatening emergency** Triple Zero  
Police Fire Ambulance **000** TTY106

**Victoria State Emergency Service (SES)** **132 500**  
For SES emergency assistance

**SES information line** **1300 842 737**  
Operates during major floods or storms **1300 VIC SES**

**VicEmergency** emergency.vic.gov.au  
Victorian emergency warnings

**Bureau of Meteorology (BoM)** **1300 659 217**  
Weather information, forecasts, warnings bom.gov.au

**National Relay Service (NRS)** relayservice.gov.au

The deaf, hearing or speech impaired can call SES or Triple Zero (000) using NRS:

|   | DIAL                | THEN ASK FOR   |
|---|---------------------|----------------|
| ■ <b>Speak and Listen (SSR)</b> users phone | <b>1300 555 727</b> | <b>132 500</b> |
| ■ <b>TTY / Voice</b> users phone            | <b>13 36 77</b>     | <b>132 500</b> |

**Internet Relay** users log into iprelay.com.au/call/  
then enter: **132 500 or 000**

**VicRoads** **13 11 70**  
Road closures and hazard reporting service vicroads.vic.gov.au

## City of Ballarat Contact Details

**Phone:** (03) 5320 5555  
**Web:** ballarat.vic.gov.au

**Weather District:** Central

**Catchment Management Authority:** Glenelg Hopkins  
ghcma.vic.gov.au

## Emergency Broadcasters

Emergency broadcasters include ABC Local Radio, designated commercial radio stations across Victoria and SKY NEWS Television.

- ABC Local 107.9 FM
- ABC Western Victoria 594 AM
- ABC Western Victoria 94.1 FM
- 3BA 102.3 FM
- Power 103.1 FM
- SKY NEWS Television

## Complete the following and keep this information handy close to the phone:

Your electricity supplier: \_\_\_\_\_

Your gas supplier: \_\_\_\_\_

Doctor: \_\_\_\_\_

Vet: \_\_\_\_\_

## Insurance

Policy Number: \_\_\_\_\_

Phone Number: \_\_\_\_\_