



# Local Flood Guide Eagle Point



Flood information for the Gippsland Lakes at Eagle Point



EAGLE POINT



EAST GIPPSLAND  
CATCHMENT  
MANAGEMENT  
AUTHORITY



FLOOD STORM  
EMERGENCY **132 500**

For more information visit  
[www.ses.vic.gov.au](http://www.ses.vic.gov.au)

## The Eagle Point local area

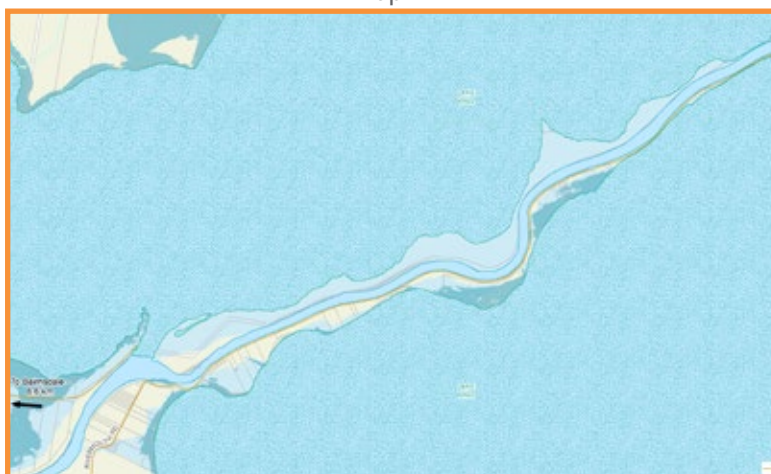
Eagle Point is a community on the shores of Lake King and on the banks of the Mitchell River. The Silt Jetties form part of the Eagle Point community and are at the mouth of the Mitchell River jutting out into Lake King.

Floods in this community occur as a result of flooding in the Gippsland Lakes caused in turn by flooding of the Latrobe, Thomson, Macalister, Avon, Mitchell, Nicholson and/or Tambo Rivers which flow into the Gippsland Lakes.

Flooding typically occurs one to three days after these rivers have experienced flooding with peaks slow to rise and recede, sometimes taking up to two weeks. Wind can also increase the lake levels in Eagle Point by up to 30 centimetres.

Map 1 below shows the likely flooding at the Minor Flood Level which measures 0.7 metres on the McMillan Straits at Paynesville Gauge and the 2007 flood event for the Silt Jetties. Map 2 shows likely flooding at the Minor Flood Level, the 2007 flood event and the effects of a 1% flood in Eagle Point. A 1% flood means there is a 1% chance of a flood this size occurring in any year.

Map 1



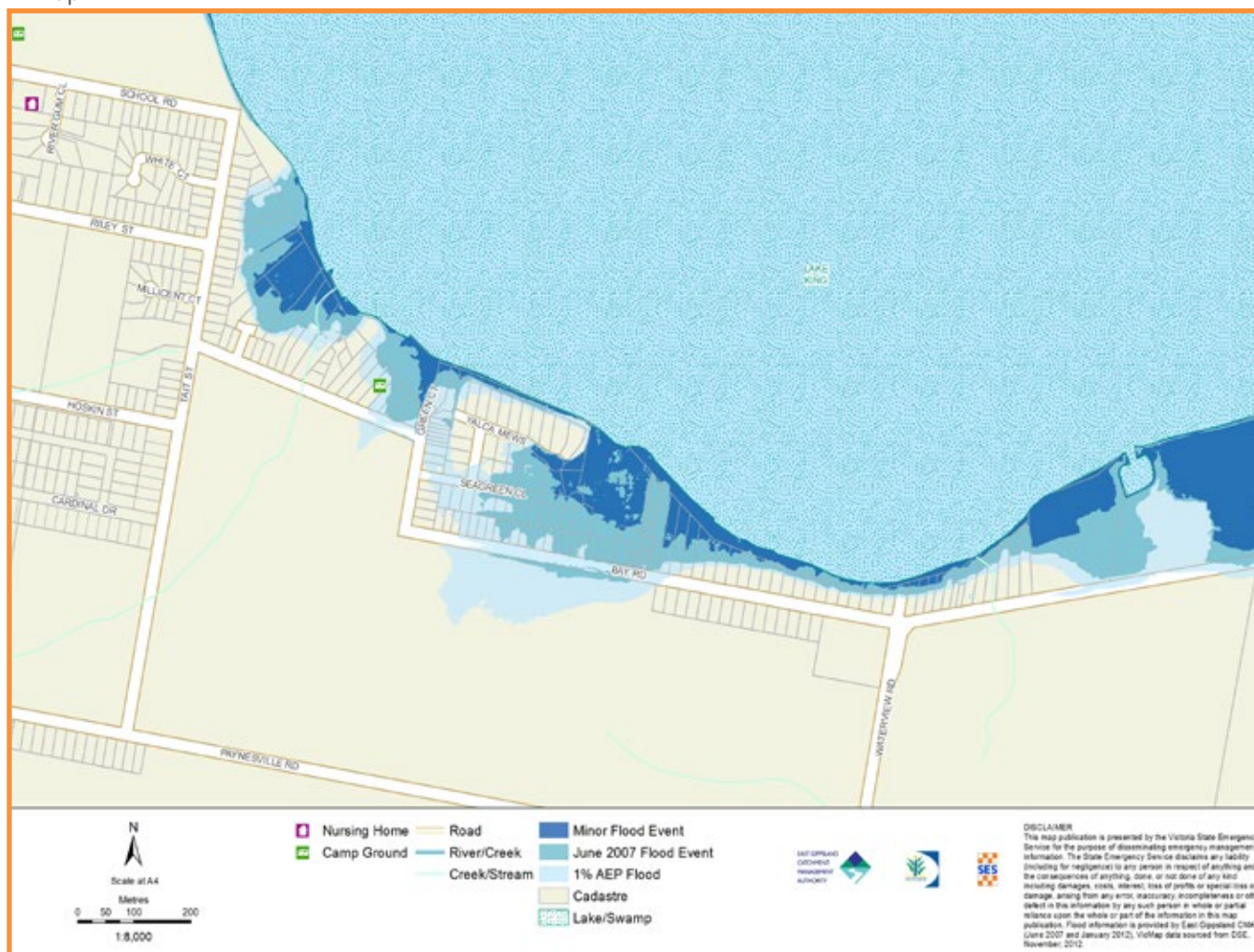
### Your local emergency broadcasters are:

- ABC Radio 828 AM or 100.7 FM
- TR FM 99.5 FM
- 3GV Gold 1242 AM
- SKY NEWS Television

### East Gippsland Shire contact details:

Phone: 1300 555 886  
 Email: [feedback@egipps.vic.gov.au](mailto:feedback@egipps.vic.gov.au)  
 Web: [www.eastgippsland.vic.gov.au](http://www.eastgippsland.vic.gov.au)

Map 2



### Disclaimer

This publication is presented by the Victoria State Emergency Service for the purpose of disseminating emergency management information. The contents of the information have not been independently verified by the Victoria State Emergency Service. No liability is accepted for any damage, loss or injury caused by errors or omissions in this information or for any action taken by any person in reliance upon it. Flood information is provided by East Gippsland Catchment Management Authority.



## Are you at risk of flood?

The Gippsland Lakes have a history of flooding. In Eagle Point, low-lying community infrastructure such as boat ramps, car parks and jetties are impacted by flooding from both the Mitchell River and Gippsland Lakes.

Boat ramps, jetties and car parks flood early which can cause unwary boat owners to return and find their cars flooded.

Properties along the Mitchell River Silt Jetties are generally isolated early due to high velocity flows from the Mitchell River. The properties most at risk are on Rivermouth Road on the Silt Jetties between the Mitchell River and Lake King, and those facing Lake King along Bay Road.

Boats in marinas and jetties will need their mooring lines adjusted as the lake heights build and recede.

## Did you know?

During June 2007, four major east coast lows formed off the coast of New South Wales and eastern Victoria, with each one producing heavy rainfall. The last east coast low brought up to 300 millimetres of rainfall in the Gippsland Lakes catchment resulting in lake levels rising 1.3 metres above normal levels.

Flooding could occur again in Eagle Point with similar or greater consequences including:

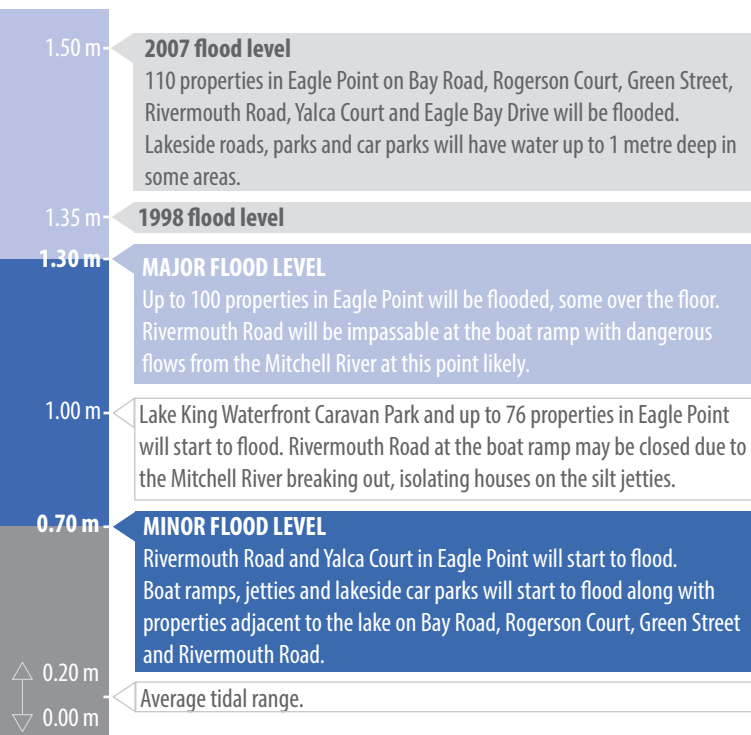
- Many local roads closed.
- Properties isolated for up to two weeks.
- Over floor inundation to properties especially on the Silt Jetties.
- Boat ramps, jetties and car parks flooded.

While no two floods are the same, floods like this or worse could occur again.

Knowing what to do could save your life and help protect your property.

## Gippsland Lakes flood levels at the McMillan Straits at Paynesville Gauge

When the Bureau of Meteorology issues warnings for floods they may include a prediction of the flood height for the McMillan Straits at Paynesville Gauge. While no two floods are the same, the following table can give you an indication of what you might expect at certain heights, including when your access may be cut off and when your property may be affected.



Aerial view of Eagle Point, 2007 flood

# About Flood Warnings

## What warnings mean

Warnings are issued by the Bureau of Meteorology to inform people about the possibility of flooding.

A **Flood Watch** means there is a developing weather pattern that might cause floods.

**Flood Warnings** mean flooding is about to happen or is already happening.

For the Gippsland Lakes, Flood Warnings are generally issued after many days of flooding in communities such as Traralgon, Sale, Stratford and Bairnsdale and before flooding begins in the communities around the Gippsland Lakes.

A Flood Warning provides predictions of flood impact and the estimated time before the lake will reach particular levels at various gauges and how long it will take for the waters to recede.

### A Minor Flood Warning means:

- Lake levels start to flood waterside car parks and boat ramps.
- Puddling will occur on and beside low-lying roads and properties.
- Storm water drains will start to flood internal roadways and properties.
- Caravan parks may start to flood.
- Some local low-lying roads will start to flood.

### A Major Flood Warning means:

- Lake levels have risen and cause extensive flooding in the towns and on lakeside farmland.
- Residential and commercial properties are flooded.
- Major traffic routes will be closed.
- Properties and towns will be isolated.
- Numerous evacuations may be required.

The Victoria State Emergency Service (SES) will give information about how the floodwater might affect people and properties. This includes safety messages to remind you what to do.

### Severe Thunderstorm Warnings

Thunderstorms are classified as severe, due to their potential to cause significant localised damage through: wind gusts, large hail, tornadoes or flash flooding. Severe Thunderstorm Warnings are issued to the community by the Bureau of Meteorology.

### Severe Weather Warnings

These warnings are issued to the community the Bureau of Meteorology when severe weather is expected that is not directly related to severe thunderstorms or bushfires. Examples of severe weather include damaging winds and flash flooding.

**Flash Flooding** happens quickly. There may be little or no warning. The arrival time or depth of a flash flood can usually not be predicted.

**Remember, you may not receive any official warning.**

**Emergency assistance may not be immediately available. Be aware of what is happening around you to stay safe.**

**Never wait for a warning to act.**

## Emergency Alert

SES may provide alerts to the Eagle Point community through the Emergency Alert telephone warning system. All emergency service providers can use Emergency Alert to warn communities about dangerous situations by voice message to landline telephones or text message to mobile phones.

If you receive a warning, make sure all family members, people at work and your neighbours are aware of the situation.

**If you receive an Emergency Alert you should pay attention and act. It could mean life or death.**

If you need help to understand a warning, ask a friend, neighbour or family member.

## Warnings for Eagle Point

For the Gippsland Lakes, Flood Warnings are issued by the Bureau of Meteorology. Flood Warnings provide predictions of flood size, time and possible peaks of the Gippsland Lakes at Eagle Point.

It is important to know how the predicted flood levels are likely to impact you as you may be affected before the peak, *see page 3: Gippsland Lakes flood levels at the McMillan Straits at Paynesville Gauge.*

Use this table to figure out when you need to follow your flood emergency plan.

### NOW – before a flood

- Check if your home or business is subject to flooding. For more information, contact East Gippsland Shire.
- Develop an emergency plan.
- Check if you could be cut off by floodwater.
- Know the safest way to go if you decide to leave your property and plan an alternative route.
- Check your insurance policies to ensure your equipment, property and business are covered for flood damage.
- Keep a list of emergency numbers near the telephone.
- Put together an emergency kit.
- Stay alert for weather warnings and heavy rainfall.

### When a flood is likely

- Take action. Follow your emergency plan.
- Listen to your radio for information and advice.
- Check your neighbours are safe and know about the flood.
- Stack possessions on benches and tables with electrical goods in the highest places.
- Anchor objects that are likely to float and cause damage.
- Move rubbish bins, chemicals and poisons to the highest place.
- Put important papers, valuables, photos and other special personal items into your emergency kit.
- Business owners should raise stock, business records and equipment onto benches and tables.
- Rural property owners should move livestock, pumps and machinery to higher ground.
- If you are likely to be isolated, have enough food, drinking water, medicine, fuel and other needs to last at least three days.
- Do not forget pet food and stock feed.

#### The time for me to evacuate is before:

---

---

---

---

---

---

---

### Your emergency plan

Emergencies can happen at any time, with little warning. People who plan and prepare for emergencies reduce the impact and recover faster.

Taking the time to think about emergencies and make your own plan helps you think clearly and have more control to make better decisions when an emergency occurs.

Your emergency plan should identify:

- The types of emergencies that might affect you.
- How those emergencies might affect you.
- What you will do before, during and after an emergency.
- Where to get more information.
- Where you will go if you evacuate and the best way to go in different circumstances.
- A list of phone numbers you will need, including emergency service providers, your insurance company, friends and family.



Visit [ses.vic.gov.au](http://ses.vic.gov.au) to obtain a copy of your Home Emergency Plan workbook

### Evacuation

During a flood, Police, SES and other emergency service providers may advise you to evacuate to keep you safe. It is important that you follow this advice.

There are two types of evacuation notices that may be issued via your emergency broadcaster during a flood:

- **Prepare to evacuate** – means you should act quickly and take immediate action to protect your life and property. Be ready to leave your property.
- **Evacuate immediately** – you must leave immediately as there is a risk to lives. You may only have minutes to evacuate in a flash flooding situation.

Do not return to your home until you are sure it is safe to do so. You do not need to wait to be told to evacuate.

# Emergency Kit

Every home and business should have a basic emergency kit:



Check your kit often. Make sure things work. Replace out of date items.

When a warning is issued, have ready for use or pack into your kit:



## I need to add:

Write your list here. Tick items as you pack them into your kit.

- Special needs \_\_\_\_\_
- Photos \_\_\_\_\_
- Family keepsakes \_\_\_\_\_
- Valuables \_\_\_\_\_
- Documents \_\_\_\_\_
- Other \_\_\_\_\_



# During and After a Flood

**Never**  
Drive, Ride or Walk  
Through Floodwater

## During a flood

When flooding has begun:

- **Never drive, ride, swim or walk through floodwater.**
- Remember that floodwater can be deeper than you think and can hide damaged roads and bridges.
- Never let your children play or swim in floodwater. It is dirty, dangerous and deadly.
- Tune in to your emergency broadcasters: ABC Local Radio, Commercial Radio, designated Community Radio Stations and SKY NEWS Television.
- In life-threatening emergencies, call Triple Zero (000).
- For SES emergency assistance during floods and storms call 132 500.
- Stay away from all waterways including drains and culverts.
- Stay away from fallen powerlines as electricity travels easily through water.
- Be aware that animals such as snakes, rats, spiders and other pests may be on the move during a flood. These animals can come into houses and other buildings or hide around sandbags.
- Keep in contact with neighbours.
- Be prepared to leave early.

When you leave early or evacuate:

- Try to leave as early as possible as roads can be closed by floodwater.
- Take your emergency kit and three days supply of clothing with you.
- Turn off the electricity, gas and water as you leave.
- Take your pets with you. Dogs should be muzzled and cats in cages.
- Go to a Relief Centre or to stay with friends or family in a non flooded area.

If activated, Relief Centres can provide:

- Temporary accommodation
- Financial help
- Personal support
- Drinks and meals
- Basic clothing and personal needs
- Assistance with contacting family and friends.

If you choose to shelter with a friend or relative, tell authorities where you are staying.

## After a flood

Flood dangers do not end when the water begins to fall. To make sure you stay safe:

- Keep listening to local emergency broadcasters.
- Do not return home until you are sure that it is safe.

Once you return to your home:

- Investigate the structural safety of your building.
- Drink bottled water or boil all drinking water until advised that the water supply is safe.
- Throw away any food or medicines that may have been in contact with floodwater or affected by power outages.
- When entering a building, use a torch to light your way. Never use matches or cigarette lighters as there may be gas inside.
- Keep the electricity and gas off until checked and tested by a professional.
- Take photographs of all damage for insurance.
- Clean your home straight away to prevent disease.

## How SES helps the community

The Victoria State Emergency Service (SES) is a volunteer based emergency service. Although SES volunteers attempt to reach everyone prior to or during an emergency, at times this is not possible, especially during flash flooding which occurs so quickly. Therefore it is advisable for you to be prepared for emergencies so that you can share responsibility for your own wellbeing during those times. In a flood, SES assistance may include:

- Giving flood advice
- Protecting essential services
- Helping to protect infrastructure
- Rescuing people from floodwater
- Advising of an evacuation

To assist your preparation, it is recommended that you obtain a copy of the SES Home Emergency Plan by visiting [ses.vic.gov.au](http://ses.vic.gov.au).



# Emergency Checklist

## NOW: Flood preparation

- Check if your insurance policy cover flooding.
- Keep this list of emergency numbers near the telephone.
- Put together an emergency kit and prepare a home or business emergency plan, see [ses.vic.gov.au](http://ses.vic.gov.au).

## When you hear a Flood Watch or weather warning

- Listen to Severe Weather Warnings for flash flood.
- Listen to the radio and check the SES website for more information and advice.
- Go over your emergency plan. Pack clothing and other extra items into your emergency kit and take this with you if you evacuate.
- Leave early if you intend to evacuate.

## When flooding may happen soon (heavy rainfall)

- Make sure your family members and neighbours are aware of what is happening.
- Conditions change rapidly, roads and escape routes can be covered or blocked. Don't forget to take pets and your medicine with you.
- Put household valuables and electrical items as high as possible.
- Turn off water, gas and electricity at the mains.
- Secure objects likely to float and cause damage.
- If you are staying in a caravan or temporary dwelling, move to higher ground before flooding begins.

## During the flood

- For SES emergency assistance, call 132 500.
- Do not drive, ride, swim or walk through floodwater. This is the main cause of death during floods.
- NEVER allow children to play in floodwater. This is the main cause of death during floods for children and young people.
- Stay away from drains, culverts and waterways as water can flow quickly and have strong currents.
- Stay well clear of fallen trees, powerlines and damaged buildings.

## After the flood: recovery

- If your property has been flooded, check with East Gippsland Shire for information and advice.
- Have all electrical and gas equipment professionally tested before use.

For more information visit:

-  [ses.vic.gov.au](http://ses.vic.gov.au)
-  [facebook.com/vicses](https://facebook.com/vicses)
-  [twitter.com/vicseswarnings](https://twitter.com/vicseswarnings)

# Emergency Contacts

**Life-threatening emergency**  
Police Fire Ambulance

**000** Triple Zero  
TTY106

**Victoria State Emergency Service (SES)**  
For SES emergency assistance

**132 500**

**SES Information Line**

Operates during major floods or storms

**1300 842 737**  
**1300 VIC SES**  
[ses.vic.gov.au](http://ses.vic.gov.au)

**Bureau of Meteorology (BoM)**

Weather information, forecasts, warnings

**1300 659 217**  
[bom.gov.au](http://bom.gov.au)

**National Relay Service (NRS)**

[www.relayservice.com.au](http://www.relayservice.com.au)

The deaf, hearing or speech impaired can call SES or Triple Zero (000) using NRS:

	DIAL	THEN ASK FOR
■ <b>Speak and Listen (SSR)</b> users phone	<b>1300 555 727</b>	<b>132 500</b>
■ <b>TTY / Voice</b> users phone	<b>13 36 77</b>	<b>132 500</b>

**Internet Relay** users log into

[www.iprelay.com.au/call/](http://www.iprelay.com.au/call/)  
then enter: **132 500 or 000**

**VicRoads**

Road closures and hazard reporting service

**13 11 70**  
[vicroads.vic.gov.au](http://vicroads.vic.gov.au)

## East Gippsland Shire Contact Details

Phone: **1300 555 886**  
Email: [feedback@egipps.vic.gov.au](mailto:feedback@egipps.vic.gov.au)  
Web: [www.eastgippsland.vic.gov.au](http://www.eastgippsland.vic.gov.au)

**Weather District:** East Gippsland

**Catchment:** Gippsland Lakes

## Emergency Broadcasters

Emergency broadcasters include ABC Local Radio, designated commercial radio stations across Victoria and SKY NEWS Television.

- ABC Radio 828 AM or 100.7 FM
- TR FM 99.5 FM
- 3GV Gold 1242 AM
- SKY NEWS Television

**Complete the following and keep this information handy close to the phone:**

Your electricity supplier: \_\_\_\_\_

Your gas supplier: \_\_\_\_\_

Doctor: \_\_\_\_\_

Vet: \_\_\_\_\_

## Insurance

Policy Number: \_\_\_\_\_

Phone Number: \_\_\_\_\_