



# Local Flood Guide

## *Clayton & Oakleigh East*

Understand, prepare, and respond effectively to your flood risk.



Victorian State Emergency Service acknowledges Aboriginal Traditional Owners of Country throughout Victoria and pays respect to their cultures and Elders past and present.



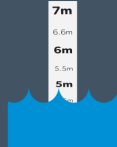
## In this guide

- Local flood information Page 2-5
- How to plan and prepare for floods Page 6
- What to do in a flood emergency Page 7
- Sandbagging Guide Page 8-9

## Local flood information



There have been five significant flood events in Clayton and Oakleigh East between 1985 and 2023.



The largest flood on record was in 1984 when the floodwater reached 5.69 metres at Dandenong Creek.



Flooding can happen within hours, giving people little to no time to prepare and take action.

## Why does Clayton and Oakleigh East flood?

- Stormwater drainage at the Clayton drain and Burton Avenue drain may not be able to cope with heavy rainfall causing flooding.
- Urban development such as more buildings, less green areas, reduces the ability for rainwater to soak into the ground, leading to the water pooling in low areas and causing floods.

This type of flooding is called **flash flooding**.

## How do floods impact communities?

Floods can impact you in many ways, even if your home or workplace stays dry.



Buildings flooded



Road closures



Drinking water supply and quality affected



Power outages



Mobile and internet network



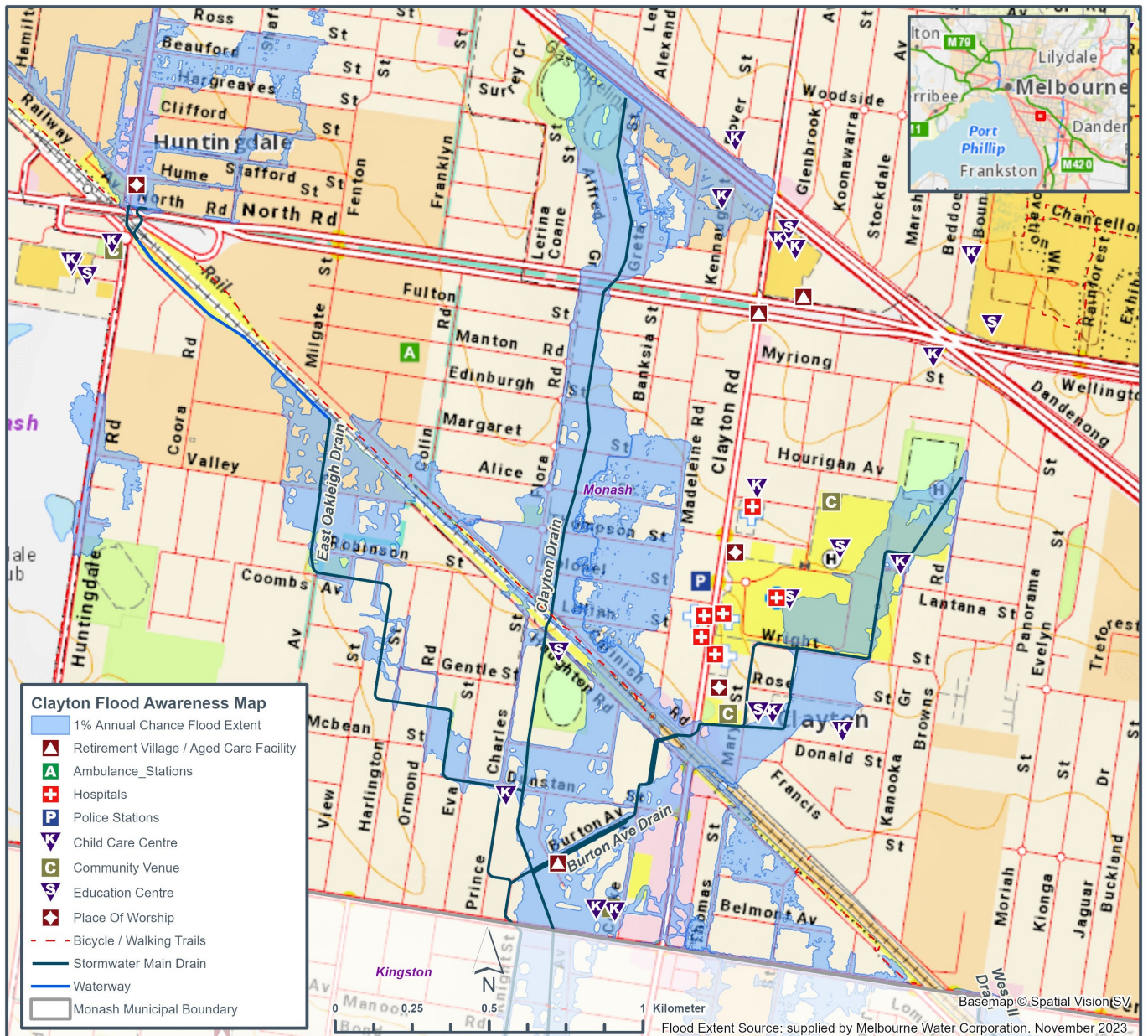
Sewage overflows inside building



## What area is at risk in a significant flood?

- This map shows the expected affected area in a significant flood that would measure at least 2.90 metres high at the Clayton Drain in Merlyn Avenue, Clayton South.
- This is referred to as a 1% Annual Chance Flood Extent, which means there is a 1 in 100 chance (or greater) of this type of flooding happening every year.

- ✓ Check the map to see if your home and places you go often are impacted.
- ✓ Review the travel routes to these locations and your evacuation point. If they are impacted, consider alternative routes to avoid the risk of driving through floodwater.



Click to enlarge, or visit [ses.vic.gov.au/city-of-monash](https://ses.vic.gov.au/city-of-monash)

**Disclaimer:** This map publication is presented by Victoria State Emergency Service for the purpose of disseminating emergency management information. The contents of the information have not been independently verified by Victoria State Emergency Service. No liability is accepted for any damage, loss or injury caused by errors or omissions in this information or for any action taken by any person in reliance upon it. Flood information is provided by Melbourne Water.

## What might happen in a flood in your area?

No two floods are the same. It's hard to know what future flooding will look like because the environment is always changing. This often includes more buildings, less green areas, and increasing storms or heatwaves due to climate change.

- **Before a flood:** Use the floodwater heights in the table to help you decide when you will need to act to protect yourself and your property in a flood.
- **During a flood:** When a warning is issued by [VicEmergency](#), use the predicted floodwater height, and warning information to understand what the potential impacts may be for you and your community.



Height of flood water^ (metres)	How likely is this flood to happen	Properties that may flood*	Roads that may have water at least 30cm deep on them*	
<b>2.90m</b> Area shown on map, page 2	<b>1%</b> or greater chance each year	<b>304</b>	<b>Clayton</b>	<b>Oakleigh East</b>
			<ul style="list-style-type: none"> <li>■ Alice Street</li> <li>■ Browns Road</li> <li>■ Carnish Road</li> <li>■ Centre Road</li> <li>■ Edinburgh Street</li> <li>■ Faulkner Street</li> <li>■ Flora Road</li> <li>■ Fulton Street</li> <li>■ Manton Road</li> <li>■ Rose Street</li> <li>■ Thompson Street</li> <li>■ Yarram Crescent</li> </ul>	<ul style="list-style-type: none"> <li>■ Alfred Grove</li> <li>■ Dandenong Road</li> <li>■ Greta Street</li> </ul>
<b>2.53m</b>	<b>5%</b> or greater chance each year	<b>138</b>	<b>Clayton</b>	<b>Oakleigh East</b>
			<ul style="list-style-type: none"> <li>■ Alice Street</li> <li>■ Browns Road</li> <li>■ Carnish Road</li> <li>■ Manton Road</li> </ul>	<ul style="list-style-type: none"> <li>■ Alfred Grove</li> <li>■ Dandenong Road</li> <li>■ Greta Street</li> </ul>
<b>2.01m</b>	<b>20%</b> or greater chance each year	<b>30</b>	<b>Clayton</b>	
			<ul style="list-style-type: none"> <li>■ Carnish Road</li> <li>■ Browns Road</li> </ul>	

^The height measurement is at the Clayton Drain in Merlyn Avenue, Clayton South.

\*This table includes information from previous flood events and flood studies, which are scientific models used to predict impacts at different flood heights and flows.



## Previous flood impacts

While no two floods are the same, understanding the impacts of past floods can help you anticipate impacts of future flood events.

### 2011 Flood

- 184 requests for assistance received by VICSES due to the impact of the flood.

### 2007 Flood

- Rain event lasted three days.
- 549 properties experienced flooding.

### 2005 Flood

- 140 millimetres of rain fell within 27 hours causing flooding.

## Your local services

Include these contacts in your Emergency Plan, see page 6 for more information.

### Catchment Management Authority

*Property specific flood impact information.*

- Melbourne Water**  
[melbournewater.com.au](http://melbournewater.com.au) | 13 17 22

### Local Council

*Relief support after a flood event.*

- City of Monash**  
[monash.vic.gov.au](http://monash.vic.gov.au) | 03 9518 3555



# Plan and prepare for floods

Floods can happen suddenly, but people who plan and prepare can make informed decisions and recover faster. Follow these steps to **Be Flood Ready**.

## 1 Stay informed

VicEmergency is Victoria's combined source of emergency information and warnings.

- Set-up watch zone for your area in the app for alerts when warnings are issued.
- Learn about the three different warning levels issued when an emergency is likely to impact you.



VicEmergency app  
[emergency.vic.gov.au](https://emergency.vic.gov.au)  
1800 226 226



vicemergency



@vicemergency



## 2 Make an Emergency Plan

Use information from your Local Flood Guide and your Catchment Management Authority, to help you decide;

- What you will do in a flood emergency
- When you will do it
- Who you will inform



Red Cross RediPlan is a free tool that helps you create a simple emergency plan and backs the flood actions you have chosen.

- Visit [redcross.org.au/prepare](https://redcross.org.au/prepare)
- Download the [Get Prepared](#) app

## 3 Prepare an emergency kit



You may need to stay safe for 72 hours in a disaster before help arrives. Make sure you have safe drinking water, food, and any special needs or medications for all family.



There will be extra items to be added to your emergency kit in an emergency like clothes, a phone and charger.



Watch a video on how to get your Emergency kit ready.

[youtu.be/XgyLnKDMkNo](https://youtu.be/XgyLnKDMkNo)

## 4 Reduce impacts to your property

- ☐ Keep gutters and drains clear of debris including leaves and any other items.
- ☐ Check your building and contents insurance, what kind of flooding does it cover?
- ☐ Store your valuable possessions up high.
- ☐ Back up important files and documents to a cloud storage or USB kept elsewhere.
- ☐ Identify higher ground on or around your property, away from the danger area.
- ☐ Consider buying sand and sandbags from a hardware store ahead of time, especially if you live in a flood prone area. Refer to our [Sandbag Guide](#) for more information.

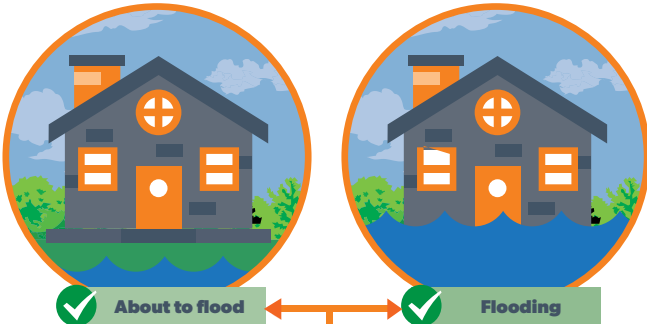


For more details and other tips, visit: [ses.vic.gov.au/plan-and-stay-safe/emergencies/flood](https://ses.vic.gov.au/plan-and-stay-safe/emergencies/flood)

# What to do in a flood emergency

Understanding what to do in emergencies can save lives and help protect your family and property.

## Who to call for help



Call VICSES 132 500



If life threatening call triple zero 000

## Stay Informed

Warnings will be issued by VicEmergency when an emergency is likely to impact you.

They will provide information on what is happening and their best advice on what you should do.

- Set-up a watch zone on the app for alerts in your area.



VicEmergency app  
[emergency.vic.gov.au](https://emergency.vic.gov.au)  
1800 226 226



@vicemergency



vicemergency

## Emergency broadcasters



- **Radio** | ABC Melbourne 774AM
- **TV** | Sky News

## If you expect floodwater at your property

1



### Bag it

Sandbag doorways and low-lying windows to slow floodwater entering your home.

2



### Block it

Block toilets, bath and drains using a sandbag ideally placed inside a plastic rubbish bag.

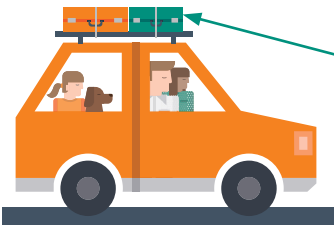
3



### Lift it

Put your valuables and electrical items as high as possible. Turn off power, gas, and water at the mains.

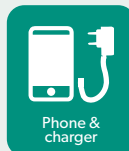
4



### Leave

- Leave BEFORE the flood arrives.
- Check warnings from VicEmergency for information like evacuation or relief centres and road closures.
- Go to the home of family or friends away from the flood impact area.

### Take your emergency kit and add the items below:



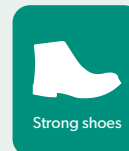
Phone & charger



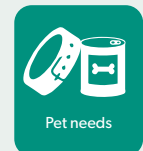
Prescriptions & medication



Clothes for your family



Strong shoes



Pet needs

## Never drive through floodwater

Large



A Large 4WD can be moved by water only 45cm deep.  
A 2.5 tonne car with water flow speed of 3.6km/h

Medium



A mid-sized car can be moved by water only 30cm deep.  
A 1.5 tonne car with water flow speed of 3.6km/h

Small



A small car can be moved by water only 15cm deep.  
A 1.05 tonne car with water flow speed of 3.6 km/h



For more details and other tips, visit:  
[ses.vic.gov.au/plan-and-stay-safe/emergencies/flood](https://ses.vic.gov.au/plan-and-stay-safe/emergencies/flood)



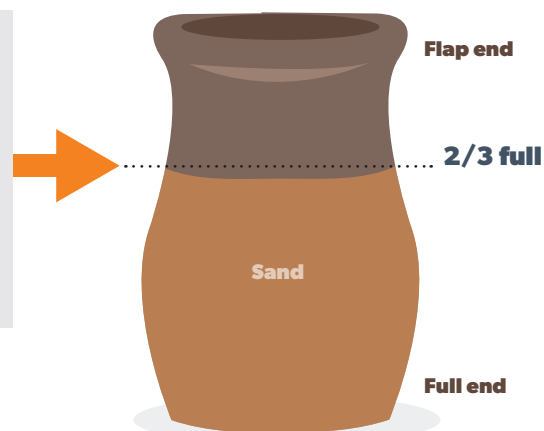
# Sandbagging

## Protecting your home

Sandbags won't stop the water completely, but can reduce the amount of water entering your home.

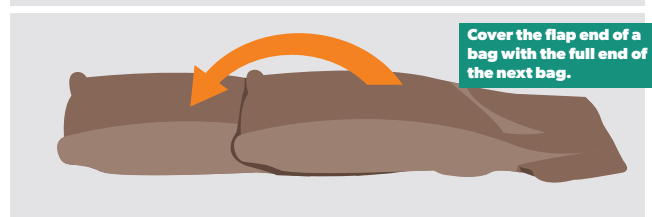
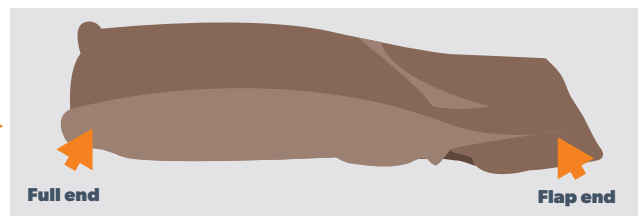
### How do I fill a sandbag?

- Only use sand to fill hessian bags. Do not use dirt.
- Only fill sandbag two-thirds full.
- Do not over fill the sandbag as it will be too heavy to carry.
- Do not tie the top of the sandbag.
- Take care when filling and lifting the sandbag, to avoid injury.



### How do I lay sandbags?

- Lay sandbags like brickwork. Stagger rows so that the joins do not line up.
- Start at one end and work to the other end.
- Ensure the unfilled part of the bag is covered by the next bag.
- Tuck flap under the bag at the end of the row.
- If the sandbag wall is going to be more than five (5) bags high, you will need to lay two (2) rows wide.



### Where do I place the sandbags?

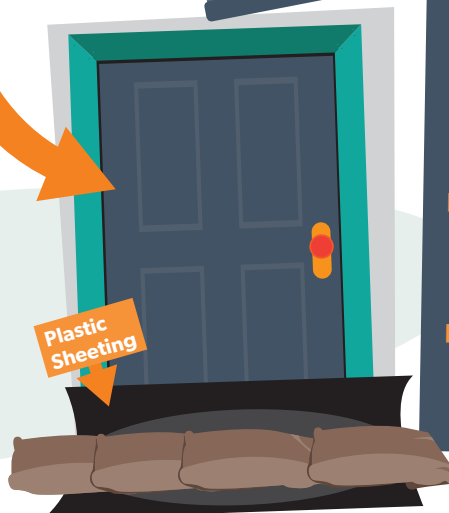
- Place sandbags in plastic bags to cover drainage holes in home (e.g. showers, toilets, sinks) to stop back flow of water.
- Place a small wall across doorways, at least the height of the expected water level. Be careful not to trap yourself inside.
- If available, plastic sheeting may be used under sandbags to reduce the seepage.

#### Block it

Toilets, bath and all drain holes



Plastic Sheeting



### What do I do once I have finished with the sandbags?

- Sturdy gloves should be worn when handling wet sandbags as they can contain chemicals, waste and diseases.
- Sandbags that have been in contact with floodwater need to be thrown away.
- Contact your local council to find out how to dispose of your sandbags safely.







# Sandbags and sand

## Preparing your home

Having sandbag supplies ready can assist you before a flooding emergency occurs.



### What supplies do I need to sandbag my home?

- Sandbags
- Sand
- Plastic sheeting
- Gloves and safety goggles
- Shovel or hand scoop

### Where can I purchase these supplies?

- Many sandbag supplies can be purchased from hardware stores or garden centers.
- VICSES do not routinely supply sandbags to households.
- During floods, sandbag distribution points may be established in flood-affected areas.

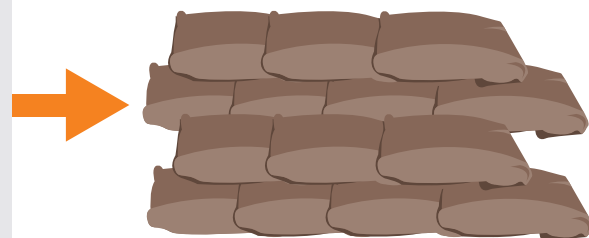


### How many sandbags will I need and how much sand?

- Most homes can be protected by less than 25 sandbags.
- The number of sandbags will depend on your local flood risk and availability.
- Sandbags are filled 2/3 full which requires around 15-20kgs of sand per bag.

### How do I store my sand and sandbags?

- Filled sandbags only have a short shelf life.
- It is recommended to store sandbags empty.
- Sandbags should be stored in a cool dry area away from UV light.
- Sand should be kept dry and can be stored in water-resistant containers or under a tarp.
- Sand is heavy - ensure it is stored so it can be moved safely.



### When should I sandbag my home?

- **You** are best placed to decide if there is a need to sandbag your home, based on local knowledge and past flood events.
- Monitor your local conditions. Stay up-to-date with weather forecasts and warnings by downloading the **BOM Weather** and **VicEmergency** apps, or call the VicEmergency Hotline on 1800 226 226.
- If you think you are at risk, do not wait for an official warning to act.

