

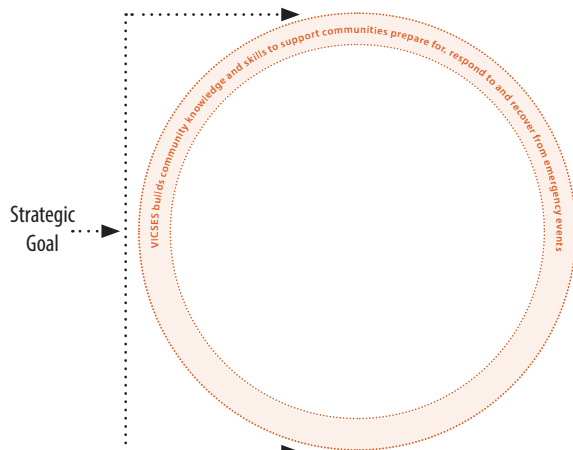
VICSES has developed a series of resilience models that are an integral part of the Community Resilience Strategy 2016-2019 (the strategy). Under our three pillars of Capacity, Collaboration and Connections the models provide the framework to test our underlying assumptions and to measure our success against our strategic objectives.

The models also provide guidance in the future design and development of our programs and resources and by which VICSES will invest effort in the delivery and evaluation of these services to the community and our partners.

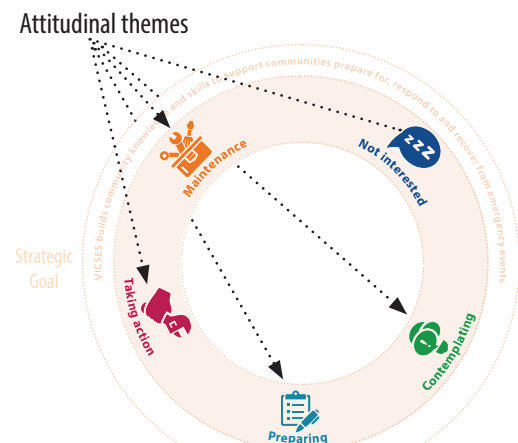


The following provides an overview to the design build of the VICSES resilience models:

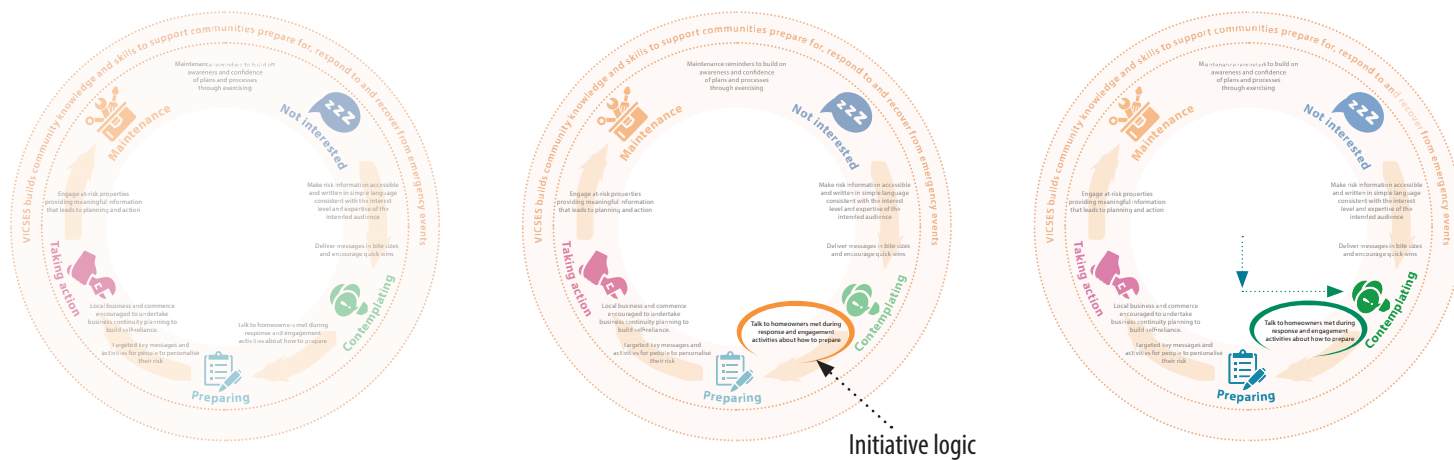
1. Outer layer represents the **strategic goal** for each of the strategic objectives – 1) Build Capacity, 2) Increase Collaborations and 3) Foster Connections as outlined in the strategy (see page 6 of the strategy)



2. Five attitudinal themes capture community attitudes from Not interested, Contemplating, Preparing, Taking action to Maintenance illustrating the varied attitudes towards risks and where the importance of being prepared and degree of preparedness vary. (see page 13 of the strategy)



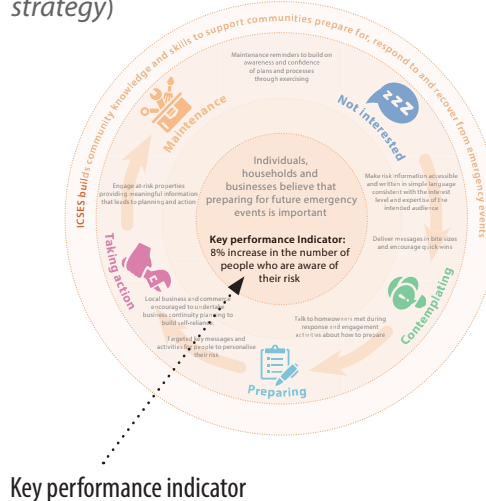
3. Initiative Logic will inform decisions and positively influence the focus and direction of what VICSES has committed to in the design and development of programs and resources. They will help us find innovative solutions to address the various challenges faced by VICSES and community aligned to attitudinal themes in better understanding community attitudes, key drivers and barriers (see pages 12-13 and 18-20 of the strategy).



4. Our Strategic Outcomes set the frame in how VICSES will quantify our performance and assess the success of the initiatives introduced during the lifetime of the strategy in shaping community attitude and awareness in relation to the relevance of, and in believing that preparing for future emergencies is important (see pages 6 & 15 of the strategy).



5. There are three Key Performance Indicators in the strategy that will support VICSES in assessing whether we are on or off target as we work towards realising our strategic intent. Operational partners, external stakeholders and academia will be engaged to explore how to best define and develop key indicators/markers that measure our achievements and to help identify and embed best practice (see pages 18,19 & 23 of the strategy)



We welcome your feedback and input to assist us in the implementation, delivery and evaluation of the strategy. You can contact us at resilience@ses.vic.gov.au or through your local VICSES regional office.