



Local Flood Guide

Newstead

Understand, prepare, and respond effectively to your flood risk.



FLOOD STORM
EMERGENCY **132 500**



If life threatening
call triple zero 000

Contents



■ Local flood information	<u>Page 3</u>
Why does Newstead flood?	<u>Page 3</u>
How do floods impact communities?	<u>Page 3</u>
Check your home, work, and travel routes for floodwater	<u>Page 4</u>
What might happen in a flood in your area?	<u>Page 5</u>
Download your free Property Flood Report	<u>Page 6</u>
Your local services	<u>Page 6</u>
■ Plan and prepare for floods	<u>Page 7</u>
■ What to do in a flood emergency	<u>Page 8</u>
■ Sandbag Guide	<u>Page 9</u>



Victorian State Emergency Service acknowledges Aboriginal Traditional Owners of Country throughout Victoria and pays respect to their cultures and Elders past and present.

Disclaimer: Victoria State Emergency Service assumes no responsibility or liability for any errors or omissions for any of the content in this document.

Content reviewed: December 2025



For more information visit: ses.vic.gov.au/plan-and-stay-safe

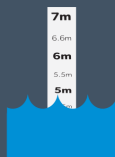


This material/publication was produced with funding provided by the Australian Government in partnership with the States and Territories under the National Partnership Agreement for Disaster Risk Reduction.

Local flood information



There have been 10 significant flood events in Newstead between 1890 and 2022.



The largest flood on record was in October 2022 when the floodwater reached 6.12m at the Newstead gauge.



Flooding can happen within hours, giving people little to no time to prepare and take action.

Why does Newstead flood?

Newstead is at risk of both **riverine flooding** and **flash flooding**, which can happen separately or at the same time. Both are usually caused by heavy rainfall.

Riverine flooding

This happens when the Loddon River rises and overflows its banks, spilling water onto land. The most common cause is **prolonged** heavy rainfall.

- Newstead is built on the Loddon River, which runs south to north through the town.
- Heavy rainfall in waterways connected to the Loddon River can lead to flooding in Newstead. This includes Campbells Creek, Larni Barramal Yaluk, Green Gully Creek, Mia Mia Creek and Muckleford Creek.
- How long it takes to flood from the time it starts raining will depend on how wet the rivers, creeks and soil already are, the amount of rainfall and how quickly it falls.

Flash flooding

This type of flooding can happen quickly and you may not receive an official warning. Although these floods only last short time, they can cause severe damage.

How do floods impact communities?

Even if your home or workplace stays dry, floods can impact you in many ways.



Buildings flooded



Road closures



Drinking water supply and quality affected



Power outages



Mobile and internet network outage



Sewage overflows inside building

Check your home, work, and travel routes for floodwater

If this map shows potential flood risk for you, ensure you take action to **plan and prepare for floods**. See [page 7](#) for more information.

- This map shows the area likely to flood in a significant flood event.
- This is referred to as a 1% Annual Exceedance Probability (AEP), which means there is a 1% chance of this size flood (or greater) happening in any year.
- The Newstead Flood Study and Mitigation Strategy is currently in progress and on completion the Local Flood Guide for Newstead will be updated.



What might happen in a flood in your area?

Although no two floods are the same and the environment is constantly changing, the below table provides an idea of what to expect at different flood heights.

- **Before a flood:** Use the floodwater heights in the table to help you decide when you will need to act to protect yourself and your property in a flood event.
- **During a flood:** When a warning is issued by [VicEmergency](#), use the predicted floodwater height and warning information to understand what the potential impacts may be for you and your community.

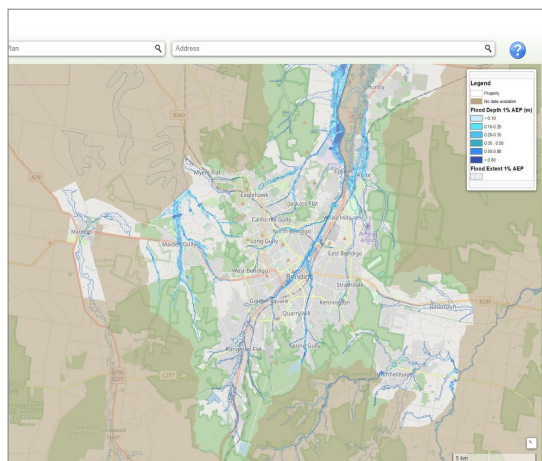


Floodwater height* (metres)	Potential impacts and previous flood events^
	October 2022 - Largest flood event on record.
6.12m	Newstead township was inaccessible from all directions after all major roads were cut by floodwater.
5.89m	January 2011 - The Loddon River water height reached 5.89m at Newstead. The southern section of the levee, built around the rivers edge to prevent river overflow, began to flood, but sandbags were used to stop it. Several properties outside the levee were flooded. 147.6mm of rain fell over three days.
5.68m	September 2010 - Several properties outside the levee were flooded.
5.64m	October 2000 - In 48 hours, a total rainfall of 103.7 millimetres was recorded. The surging floodwater covered the river flats and cut off access from the western end of the bridge.
5.63m	November 2010
5.60m	Major flood level
4.91m	September 2010
4.78m	October 2016
4.50m	Moderate flood level
3.00m	Minor flood level Newstead can become isolated when main roads are cut during a flood, with flood waters likely to cut off the Midland Highway at Newstead, depending on the river's flow.

*The height measurement is at the Loddon River at Newstead gauge.

^This table includes information from previous flood events

Download your free Property Flood Report



Flood Eye, developed by the North Central Catchment Management Management Authority, is a tool for residents and businesses to assess their flood risk.

- Use the portal to zoom in on your property and see if it's likely to be affected in a large flood event.
- Download a free property report for properties inside the mapped area.

CURRENTLY NOT AVAILABLE FOR NEWSTEAD.



In a flood emergency, stay informed through [VicEmergency](#), see [page 8](#) for more information.

Your local services

Catchment Management Authority

For property specific flood and development advice before a flood event.

- **North Central Catchment Management Authority**
nccma.vic.gov.au | 03 5448 7124

Local Council

For relief support after a flood event and general land use planning.

- **Mount Alexander Shire Council**
mountalexander.vic.gov.au | 03 5471 1700



Floodwater can be very deep, rise quickly and move fast.

Stay safe by avoiding flooded areas.

Plan and prepare for floods

1 How to stay informed

VicEmergency is Victoria's source of emergency information and warnings.

- Set-up a watch zone for your area for alerts when warnings are issued.
- Learn about the three different warning levels.



VicEmergency app
emergency.vic.gov.au
1800 226 226



vicemergency



@vicemergency



2 Make an Emergency Plan

Use information from your Local Flood Guide and your Catchment Management Authority, to help you decide;

- What you will do in a flood emergency
- When you will do it
- Who you will inform



Red Cross RediPlan is a free tool that helps you create a simple emergency plan that supports the flood actions you have chosen.

- Visit redcross.org.au/prepare
- Download the [Get Prepared](#) app

3 Prepare an emergency kit



You may need to stay safe for 72 hours in a disaster before help arrives. Make sure you have safe drinking water, food, and any special needs or medications for all family.



There will be extra items to be added to your emergency kit in an emergency like clothes, a phone and charger.



Watch a video on how to get your Emergency kit ready.
youtu.be/XgyLnKDMkNo

4 Reduce impacts to your property

- ☐ Keep gutters and drains clear of debris including leaves and any other items.
- ☐ Check your building and contents insurance, what kind of flooding does it cover?
- ☐ Move your valuable possessions up high.
- ☐ Back up important files and documents to a cloud storage or USB kept elsewhere.
- ☐ Identify higher ground on or around your property, away from the danger area.
- ☐ Consider buying sand and sandbags ahead of time, refer to our Sandbag Guide for more information.

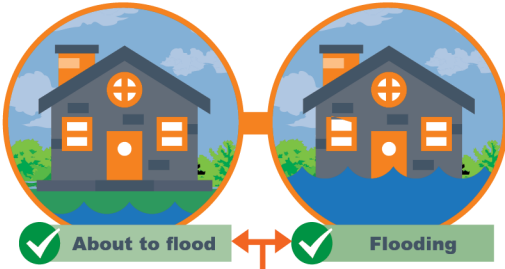


For more details and other tips, visit:
ses.vic.gov.au/flood



What to do in a flood emergency

When to call VICSES



Flood emergency assistance call VICSES 132 500



If life threatening call triple zero 000

Stay Informed

VicEmergency

Emergency warnings will provide information on what is happening and advice of what you should do.

You may not receive an official warning before a flood.



VicEmergency app
emergency.vic.gov.au

1800 226 226



vicemergency



@vicemergency

■ Set-up a watch zone for alerts for your area.

Bureau of Meteorology



Monitor rainfall, river levels, weather forecasts/warnings.

bom.gov.au/vic/flood/north_central.shtml

Emergency broadcasters



Radio | AM: 1071. FM: 91.1, 91.9, 93.5, 96.5, 98.3,

TV | Sky News

If you expect floodwater at your property

1



Bag it

Sandbag doorways and low-lying windows to slow floodwater entering your home.

2



Block it

Block toilets, bath and drains using a sandbag ideally placed inside a plastic rubbish bag.

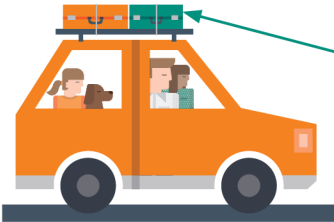
3



Lift it

Put your valuables and electrical items as high as possible. Turn off power, gas, and water at the mains.

4



Leave

■ Leave **before** the flood arrives.

■ Check warnings from VicEmergency for information like evacuation or relief centres, and road closures.

■ Travel to the home of family or friends who are in a safe location, away from the flooded area.

Take your emergency kit and add the items below:



Phone & charger



Prescriptions & medication



Clothes for your family



Strong shoes



Pet needs

Never drive through floodwater

Large



A Large 4WD can be moved by water only 45cm deep.

Small



A small car can be moved by water only 15cm deep.



For more details and other tips, visit:

ses.vic.gov.au/flood

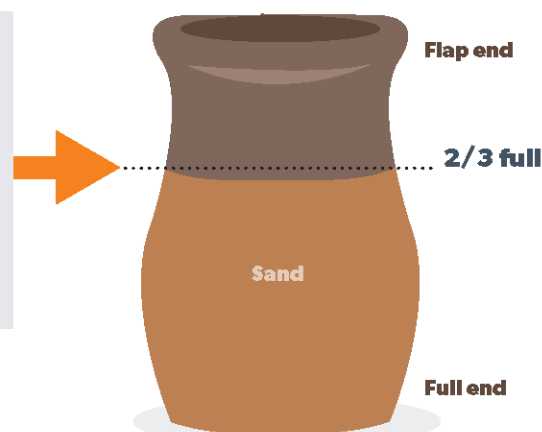
Sandbagging

Protecting your home

Sandbags won't stop the water completely, but can reduce the amount of water entering your home.

How do I fill a sandbag?

- Only use sand to fill hessian bags. Do not use dirt.
- Only fill sandbag two-thirds full.
- Do not over fill the sandbag as it will be too heavy to carry.
- Do not tie the top of the sandbag.
- Take care when filling and lifting the sandbag, to avoid injury.



How do I lay sandbags?

- Lay sandbags like brickwork. Stagger rows so that the joins do not line up.
- Start at one end and work to the other end.
- Ensure the unfilled part of the bag is covered by the next bag.
- Tuck flap under the bag at the end of the row.
- If the sandbag wall is going to be more than five (5) bags high, you will need to lay two (2) rows wide.

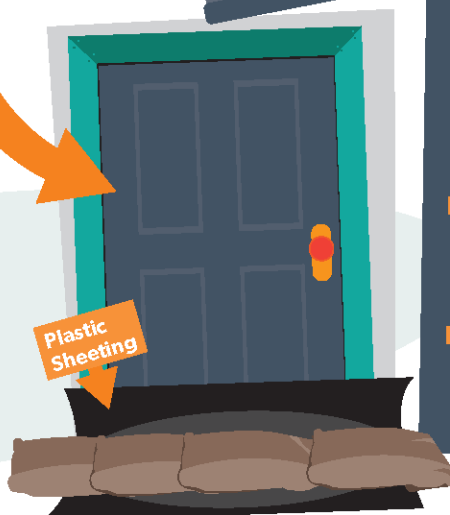


Where do I place the sandbags?

- Place sandbags in plastic bags to cover drainage holes in home (e.g. showers, toilets, sinks) to stop back flow of water.
- Place a small wall across doorways, at least the height of the expected water level. Be careful not to trap yourself inside.
- If available, plastic sheeting may be used under sandbags to reduce the seepage.

Block it

Toilets, bath and all drain holes



What do I do once I have finished with the sandbags?

- Sturdy gloves should be worn when handling wet sandbags as they can contain chemicals, waste and diseases.
- Sandbags that have been in contact with floodwater need to be thrown away.
- Contact your local council to find out how to dispose of your sandbags safely.



Sandbags and sand

Preparing your home

Having sandbag supplies ready can assist you before a flooding emergency occurs.



What supplies do I need to sandbag my home?

- Sandbags
- Sand
- Plastic sheeting
- Gloves and safety goggles
- Shovel or hand scoop

Where can I purchase these supplies?

- Many sandbag supplies can be purchased from hardware stores or garden centers.
- VICSES do not routinely supply sandbags to households.
- During floods, sandbag distribution points may be established in flood-affected areas.

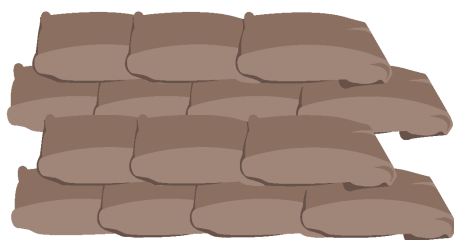


How many sandbags will I need and how much sand?

- Most homes can be protected by less than 25 sandbags.
- The number of sandbags will depend on your local flood risk and availability.
- Sandbags are filled 2/3 full which requires around 15-20kgs of sand per bag.

How do I store my sand and sandbags?

- Filled sandbags only have a short shelf life.
- It is recommended to store sandbags empty.
- Sandbags should be stored in a cool dry area away from UV light.
- Sand should be kept dry and can be stored in water-resistant containers or under a tarp.
- Sand is heavy - ensure it is stored so it can be moved safely.



When should I sandbag my home?

- **You** are best placed to decide if there is a need to sandbag your home, based on local knowledge and past flood events.
- Monitor your local conditions. Stay up-to-date with weather forecasts and warnings by downloading the **BOM Weather** and **VicEmergency** apps, or call the VicEmergency Hotline on 1800 226 226.
- If you think you are at risk, do not wait for an official warning to act.

