

Photo: Aireys Inlet, 2007



# Local Flood Guide

## *Aireys Inlet*

Understand, prepare, and respond effectively to your flood risk.

# Contents

■ <b>Local flood information</b>	<b><u>Page 3</u></b>
Why does Aireys Inlet flood?	<u>Page 3</u>
How do floods impact communities?	<u>Page 3</u>
Check your home, work, and travel routes for floodwater	<u>Page 4</u>
What might happen in a flood in your area?	<u>Page 5</u>
What roads and locations are likely to flood?	<u>Page 5</u>
Download your free Property Flood Report	<u>Page 6</u>
Your local services	<u>Page 6</u>
■ <b>Plan and prepare for floods</b>	<b><u>Page 7</u></b>
■ <b>What to do in a flood emergency</b>	<b><u>Page 8</u></b>
■ <b>Sandbag Guide</b>	<b><u>Page 9</u></b>



Victorian State Emergency Service acknowledges Aboriginal Traditional Owners of Country throughout Victoria and pays respect to their cultures and Elders past and present.

**Disclaimer:** Victoria State Emergency Service assumes no responsibility or liability for any errors or omissions for any of the content in this document.

**Content reviewed:** June 2025

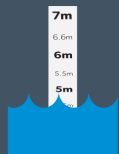


For more information visit: [ses.vic.gov.au/plan-and-stay-safe](https://ses.vic.gov.au/plan-and-stay-safe)

## Local flood information



There have been 5 significant flood events in Aireys Inlet between 1978 and 2025.



In 2007, the floodwaters covered the Floodplain and edged the Great Ocean Road near the Painkalac Bridge (see cover photo).



Flooding can happen within hours, giving people little to no time to prepare and take action.

## Why does Aireys Flood?

When the Painkalac Creek rises and overflows its banks and spills water onto land, it causes **riverine flooding**. The causes of this are heavy and prolonged rainfall.

- Flooding can happen when widespread prolonged rainfall occurs across the catchment to the north west of the town, filling Painkalac Reservoir and causing it to spill to the natural watercourse of the floodplain surrounding Painkalac Creek in Aireys Inlet.
- Intense rainfall in the townships of Aireys inlet and Fairhaven can cause localised flooding from stormwater runoff from impervious surfaces into Painkalac Creek, causing the creek to rise, overflow its bank and flood (as occurred in January 2021). These events also lead to pollution of the Creek.
- Low lying coastal areas may flood due to storm surges caused by strong winds and low pressure during storms, resulting in an abnormal rise in sea level and the formation of large waves. The berm at the mouth of the Painkalac provides a barrier for the community from storm surges.
- Low-lying coastal areas may flood due to storm surges caused by strong winds and low pressure during storms, resulting in an abnormal rise in sea level and the formation of large waves.



## How do floods impact communities?

Even if your home or workplace stays dry, floods can impact you in many ways.



Buildings flooded



Road closures



Drinking water supply and quality affected



Power outages



Mobile and internet network outage



Sewage overflows inside building



## Check your home, work, and travel routes for floodwater

If this map shows potential flood risk for you, ensure you take action to **plan and prepare for floods**. See [page 7](#) for more information.

- This map shows the area likely to flood in a 1% Annual Exceedance Probability (AEP) flood event, which means there is a 1% chance of this size flood (or greater) happening in any year.



View an interactive version of this map using the Digital Twin Victoria Public Platform.

Go to [digitaltwin.vic.gov.au](https://digitaltwin.vic.gov.au)



Find out more about **Painkalac Creek Flood Information** including:

- How to **check the height of Painkalac Creek**.
- Estuary Opening information.

Visit [surfcoast.vic.gov.au/Property/Water/Flooding/Painkalac-Creek-Flood-Information](https://surfcoast.vic.gov.au/Property/Water/Flooding/Painkalac-Creek-Flood-Information).

## What might happen in a flood in your area?

Although no two floods are the same and the environment is constantly changing, the below provides an idea of what to expect for different flood sizes.



### Minor impacts

- Water spilling over river banks and nearby low lying areas.
- Water coming up through drains in nearby streets.
- Water will cover minor paths, tracks, and low level bridges.
- Some backyards and buildings impacted below floor level



### Moderate impacts

- Water spilling over riverbanks and covering large areas of land.
- Water above floor level in some houses and buildings.
- Evacuation may be required in some areas.
- Impact to roads and traffic routes.
- Relocation of stock required in rural areas
- Loss of vehicular access to properties.



### Major impacts

- Widespread flooding.
- Many houses and businesses are inundated above floor level.
- Properties and whole areas may be isolated.
- Major roads and rail routes closed.
- Many evacuations required.
- Impact to utility services (water, power, sewerage)

## What roads and locations are likely to flood?

During a flood, the roads and locations listed below may flood and could be closed.

For current road closures, check [VicTraffic](#). [VicEmergency](#) may include road closures in its warnings, see [page 8](#) for more information.

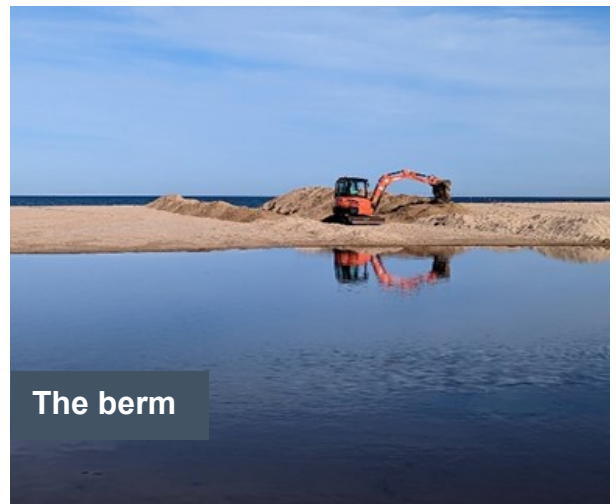
- Coastal Court
- 12-30 River Road
- River Reserve Road
- The café adjacent to Great Ocean Road, east of Painkalac Creek.



## Painkalac Estuary— Flood Mitigation

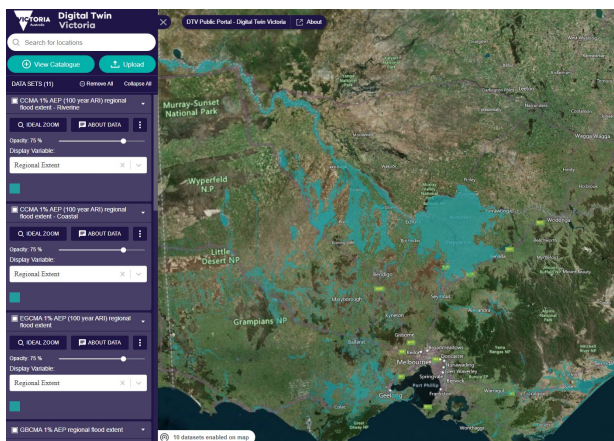
Sand naturally builds up at the mouth of Painkalac Creek, forming a long, narrow wedge of sand called a ‘berm’.

To lower the risk of flooding during periods of high creek flow, the berm is artificially opened with machinery to allow flow into the ocean.



Source: Surf Coast Shire, 2022

## View the interactive flood map on Digital Twin Victoria (DTV)



The [Digital Twin Victoria Public Portal](https://digitaltwin.vic.gov.au) brings together 2D, 3D and live data in a single online place for everyone to use. The portal hosts some

- Use the map to zoom in on where you live, work and travel to see if it’s likely to be affected in a flood event.

Go to [digitaltwin.vic.gov.au](https://digitaltwin.vic.gov.au)



In a flood emergency, stay informed through [VicEmergency](https://vicemergency.vic.gov.au), see [page 8](#) for more information.

## Your local services

### Catchment Management Authority

For general advice about flooding and controls on planning scheme amendments.

- **Corangamite Catchment Management Authority**  
[ccma.vic.gov.au](https://ccma.vic.gov.au) | 1800 002 262

### Local Council

For relief support after a flood event and general land use planning.

- **Surf Coast Shire**  
[surfcoast.vic.gov.au](https://surfcoast.vic.gov.au) | 03 5261 0600



# Plan and prepare for floods

## 1 How to stay informed

VicEmergency is Victoria's source of emergency information and warnings.

- Set-up a watch zone for your area for alerts when warnings are issued.
- Learn about the three different warning levels.



VicEmergency app  
[emergency.vic.gov.au](https://emergency.vic.gov.au)  
1800 226 226



vicemergency



@vicemergency



## 2 Make an Emergency Plan

Use information from your Local Flood Guide and your Catchment Management Authority, to help you decide;

- What you will do in a flood emergency
- When you will do it
- Who you will inform



Red Cross RediPlan is a free tool that helps you create a simple emergency plan that supports the flood actions you have chosen.

- Visit [redcross.org.au/prepare](https://redcross.org.au/prepare)
- Download the [Get Prepared](#) app

## 3 Prepare an emergency kit



You may need to stay safe for 72 hours in a disaster before help arrives. Make sure you have safe drinking water, food, and any special needs or medications for all family.



There will be extra items to be added to your emergency kit in an emergency like clothes, a phone and charger.



Watch a video on how to get your Emergency kit ready.  
[youtu.be/XgyLnKDMkNo](https://youtu.be/XgyLnKDMkNo)

## 4 Reduce impacts to your property

- ☐ Keep gutters and drains clear of debris including leaves and any other items.
- ☐ Check your building and contents insurance, what kind of flooding does it cover?
- ☐ Move your valuable possessions up high.
- ☐ Back up important files and documents to a cloud storage or USB kept elsewhere.
- ☐ Identify higher ground on or around your property, away from the danger area.
- ☐ Consider buying sand and sandbags ahead of time, refer to our Sandbag Guide for more information.

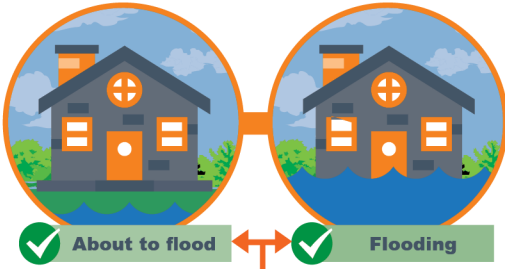


For more details and other tips, visit:  
[ses.vic.gov.au/flood](https://ses.vic.gov.au/flood)



# What to do in a flood emergency

## When to call VICSES



**Flood emergency assistance call VICSES 132 500**



**If life threatening call triple zero 000**

## Stay Informed

### VicEmergency

Emergency warnings will provide information on what is happening and advice of what you should do.

**You may not receive an official warning before a flood.**



VicEmergency app  
[emergency.vic.gov.au](https://emergency.vic.gov.au)  
1800 226 226



vicemergency @vicemergency



■ Set-up a watch zone for alerts for your area.

### Bureau of Meteorology



Monitor rainfall, river levels, weather forecasts/warnings.

[bom.gov.au/vic/flood/corangamite.shtml](https://bom.gov.au/vic/flood/corangamite.shtml)

### Emergency broadcasters



**Radio** | ABC 774 AM, Bay FM 93.9, K-Rock FM 95.5

**TV** | Sky News

## If you expect floodwater at your property

1



### Bag it

Sandbag doorways and low-lying windows to slow floodwater entering your home.

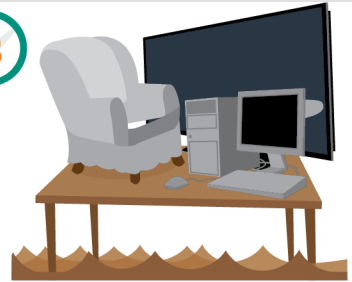
2



### Block it

Block toilets, bath and drains using a sandbag ideally placed inside a plastic rubbish bag.

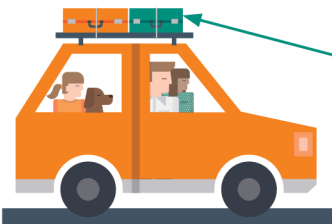
3



### Lift it

Put your valuables and electrical items as high as possible. Turn off power, gas, and water at the mains.

4



### Leave

■ Leave **before** the flood arrives.

■ Check warnings from VicEmergency for information like evacuation or relief centres, and road closures.

■ Travel to the home of family or friends who are in a safe location, away from the flooded area.

### Take your emergency kit and add the items below:



Phone & charger



Prescriptions & medication



Clothes for your family



Strong shoes



Pet needs

## Never drive through floodwater

Large



A Large 4WD can be moved by water only 45cm deep.

Small



A small car can be moved by water only 15cm deep.



For more details and other tips, visit:

[ses.vic.gov.au/flood](https://ses.vic.gov.au/flood)





# Sandbags and sand

## Preparing your home

Having sandbag supplies ready can assist you before a flooding emergency occurs.



### *What supplies do I need to sandbag my home?*

- Sandbags
- Sand
- Plastic sheeting
- Gloves and safety goggles
- Shovel or hand scoop

### *Where can I purchase these supplies?*

- Many sandbag supplies can be purchased from hardware stores or garden centers.
- VICSES do not routinely supply sandbags to households.
- During floods, sandbag distribution points may be established in flood-affected areas.

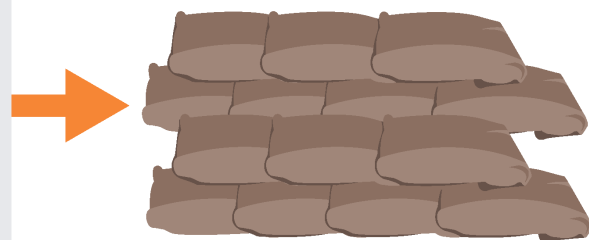


### *How many sandbags will I need and how much sand?*

- Most homes can be protected by less than 25 sandbags.
- The number of sandbags will depend on your local flood risk and availability.
- Sandbags are filled 2/3 full which requires around 15-20kgs of sand per bag.

### *How do I store my sand and sandbags?*

- Filled sandbags only have a short shelf life.
- It is recommended to store sandbags empty.
- Sandbags should be stored in a cool dry area away from UV light.
- Sand should be kept dry and can be stored in water-resistant containers or under a tarp.
- Sand is heavy - ensure it is stored so it can be moved safely.



### *When should I sandbag my home?*

- **You** are best placed to decide if there is a need to sandbag your home, based on local knowledge and past flood events.
- Monitor your local conditions. Stay up-to-date with weather forecasts and warnings by downloading the **BOM Weather** and **VicEmergency** apps, or call the VicEmergency Hotline on 1800 226 226.
- If you think you are at risk, do not wait for an official warning to act.



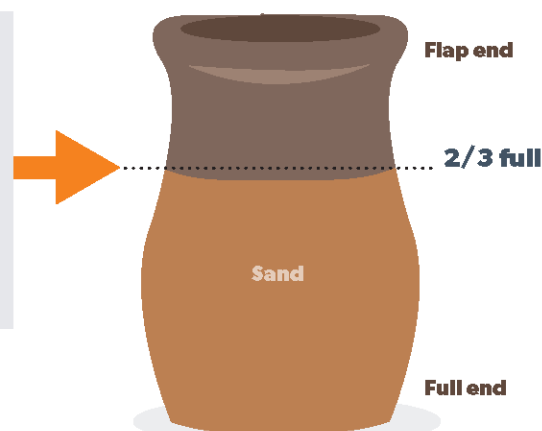
# Sandbagging

## Protecting your home

Sandbags won't stop the water completely, but can reduce the amount of water entering your home.

### How do I fill a sandbag?

- Only use sand to fill hessian bags. Do not use dirt.
- Only fill sandbag two-thirds full.
- Do not over fill the sandbag as it will be too heavy to carry.
- Do not tie the top of the sandbag.
- Take care when filling and lifting the sandbag, to avoid injury.



### How do I lay sandbags?

- Lay sandbags like brickwork. Stagger rows so that the joins do not line up.
- Start at one end and work to the other end.
- Ensure the unfilled part of the bag is covered by the next bag.
- Tuck flap under the bag at the end of the row.
- If the sandbag wall is going to be more than five (5) bags high, you will need to lay two (2) rows wide.



### Where do I place the sandbags?

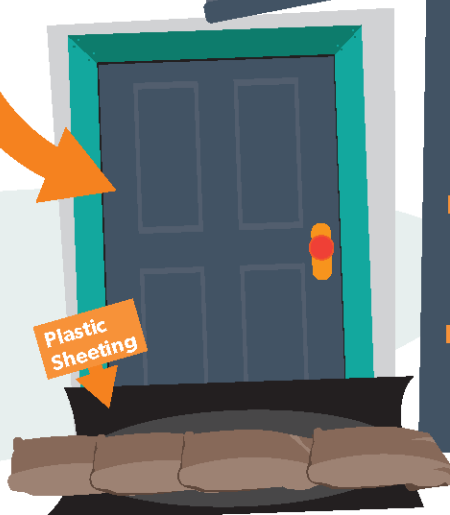
- Place sandbags in plastic bags to cover drainage holes in home (e.g. showers, toilets, sinks) to stop back flow of water.
- Place a small wall across doorways, at least the height of the expected water level. Be careful not to trap yourself inside.
- If available, plastic sheeting may be used under sandbags to reduce the seepage.

#### Block it

Toilets, bath and all drain holes



Plastic Sheetting



### What do I do once I have finished with the sandbags?

- Sturdy gloves should be worn when handling wet sandbags as they can contain chemicals, waste and diseases.
- Sandbags that have been in contact with floodwater need to be thrown away.
- Contact your local council to find out how to dispose of your sandbags safely.